



**SLEEP INN FF&E PERFORMANCE
SPECIFICATIONS**

Approved Suppliers	Contact	Email	Phone
All Signs Systems	Kelly Hartman	kelly@allsignsystems.com	Ph: (800) 995-0674
American Hotel Registry	Gia Vlahopoulos	gvlahopoulos@americanhotel.com	Ph: (847) 743 - 1577
Aqua Carpets	Julie Kaufmann	kaufmann.associates@gmail.com	Ph: (202) 421-5191
Artline Group	Puneet Bhasin	puneet@artlinegroup.com	Ph: (516) 931 - 5550
Brookline Furniture	Kiristin Durham Phillips	kristin@brooklinefurniture.com	Ph: (336) 804-8208
Clayton Miller Hospitality	Lynn Chambers	BLynnChambers@aol.com	Ph: (703) 847-6635
Culp Contract Fabrics	David Wells	DAWells@culp.com	Ph: (336)-888-6274
Durkan	Beth Ann Reymer	beth_reymer@mohawkind.com	Ph: (202) 257-4305
Fabricut Contract	Heather McCarty	heather.mccarty@hmmarketing.com	Ph: (301) 831-9520
Fabtex	Kim Swanson	kim@kdsanson.com	Ph: (301)523-0070
Formica	Carolina Ruf	Carolina.Ruf@formica.com	Ph: (513) 786-3172
Foundation Art Services	Jason Neufeldt	jason@foundationartservices.com	Ph: (561) 445- 7519
Global Industries	Doug Pearl	dpearl@globalfurnituregroup.com	Ph: (917) 608-8512
Graniti Fiandre	Joy Klein	klein@transceramica.com	Ph:(865) 776-2252
Graphic Systems	Amy Scheer	amy.scheer@identitygroup.com	Ph: (316) 267-4171
Grosfillex	Robert Marchwinski	Rmarchwinski@grosfillex.com	Ph: (610) 693 - 5835 x3534
Inpro Corporation		www.inprocorp.com	Ph:(800) 222-5556
Interface	Mike Webb	mike.webb@interfacehospitality.com	Ph:(443) 506-0324
Interia Hospitality	Amy Butowicz	amyb@interiahospitality.com	Ph: (770) 557- 3193
Johnsonite	Theresa Thomas	Theresa.Thomas@tarkett.com	Ph: (440) 708-9318
Leggett & Platt	Vinny Dimino	vinny_dimino@sponge-cushion.com	Ph:(717) 503-9474
Lexmark	Ian Fruchtman	ian@scottjordaninc.com	Ph:(732) 780-0160
Mats Inc.	Jim Cave	jcave@matsinc.com	(781)-573-0210
MDC Wallcovering	MDC National Accounts	mdcnationalaccounts@mdcwall.com	(800) 486-9800
Malar Lighting	Brad Setsor	brad@malarlighting.com	Ph: (800) 637-4992
Moonart	Calvin Eggleston	calvin.eggleston@moonart-hospitality.com	(Ph): 336-454-0733
Office Star Products	George Jack Maniscalco	George.Maniscalco@Officestar.net	Ph: (847) 287- 1619
Porcelanosa	Michele Kirby	mkirby@porcelanosa-usa.com	Ph: (201) 995-1310 ext. 2051
PPG Paints	Kevin Lastacy	klastacy@ppg.com	Ph:(616) 335-3259
Richloom	Bob Stein	bstein@richloomfabrics.com	Ph: (212) 685-2187
Rigo Wallcovering	Max Weber	salesteam@theweberteam.com	Ph:(301) 858-7345
Shafer Seating	Ken Reynolds	contraq@aol.com	Ph: (540)-295-1940
Sherwin Williams	Dan Giddens	www.sherwinwilliams.com	Ph: (703) 929-6487
Startex Industries	Ellen Saberg	ellen@startexind.com	Ph: (229)-921-0636
US Vinyl	Tara Garwood	taragarwood@usvinyl.com	Ph: (800)-633-6425
Valley Forge	Kimberly Roeser	Kroeser@valleyforge.com	Ph: (954) 642-3422
Western Hotel Signs	Alan Johnson	alan@corporateimagegroup.com	Ph: (605) 725-8947
WilsonArt	Amy Morganweck	morgena@wilsonart.com	Ph: (917) 951-3524

CONTROL NO.	DESCRIPTION	CONTROL NO.	DESCRIPTION
CARPET			
CPT-002	Carpet - Corridors/Lobby Inset / (Broadloom & Carpet Tile)	LAM-002	Front Desk - Lower Inset Face
CPTB-002	Carpet Base - Corridor	LAM-003	Front Desk Trim, Breakfast Cabinets, Coffee Bar Cabinets
CPAD-002	Carpet Pad - Public Space	LAM-004	Front Desk Upper Inset
CPT-003	Carpet - Back Of The House/ Back Stairwell/ Employee Lounge (Carpet Tile & Broadloom)	HDW-001	Breakfast Room Buffet Cabinet Hardware
CPTB-003	Carpet Base - Back Of The House/ Back Stairwell / Employee Lounge	DRAPERY / FABRICATION	
CPT-004	Carpet- Meeting Room	X-100	Roller Shade- Breakfast Room/Lobby
CPTB-004	Carpet Base - Meeting Room	X-101	Wood Blinds - Fitness Room, Offices and Pool Area
TILE			
CT-002	Ceramic Tile - Lobby/Vestibule/ Community Room and Vending/ Elevator Lobby/ Breakfast Area (Optional)	MR-102	Mock Roman Shade & Drapery Sheer Fabrication - Meeting Room
CTB-002	Ceramic Tile Base - Lobby/Vestibule/ Community Room and Vending/ Elevator Lobby/ Breakfast Area (Optional)	COR-100	Sheer (Fabrication)
CT-003	Ceramic Tile - Public Restrooms/Laundry Room/ Employee Restroom/ 2-3 Floor Landing Flooring	X-101	Mock Roman Shade Fabric - Breakfast Room/Lobby
CTB-003	Ceramic Tile Base - Public Restrooms/Laundry Room/ Employee Restroom/ 2-3 Floor Landing Flooring	X-102	Sheer Fabric - Lobby, Breakfast Room, Meeting Room & Corridor
CT-004	Ceramic Tile - Pool	SOFTGOODS / CASEGOODS	
CTB-004	Ceramic Tile Base - Pool	LBY-200	Bench with Integrated Table/ Back Panel
CT-005	Ceramic Tile - Pool Wall Tile	LBY-200A	Fabric - Bench Cushion Fabric
CT-006	Ceramic Tile - Pool Accent Wall Tile	LBY-200B	Fabric - Bench Apron Vinyl
CT-008	Ceramic Tile - Pool Water Line	LBY-200P	Throw Pillow - Sofa
LVT-001	Luxury Vinyl Tile- Lobby/Vestibule/ Community Room and Vending/ Elevator Lobby/ Breakfast Area / Market Place (Standard)	LBY-201	Lounge Chair
VT-001	Vinyl Tile- Fitness Area	LBY-201A	Fabric - Lounge Chair
RCB-001	Lobby/Vestibule/ Community Room and Vending/ Elevator Lobby/ Rubber Base - Fitness Area	LBY-202	Round Accent Table
RCB-002	Rubber Base - Back of the House / Back Stairwell / Employee Lounge	LBY-203	Curved Sofa - RENOVATION PROPERTIES ONLY
RCB-003	Rubber Base - Back of the House / Back Stairwell / Employee Lounge	LBY-203A	Fabric - Sofa Back Cushions - RENOVATION PROPERTIES ONLY
VCT-001	Vinyl Flooring - Food Prep/ Back of House / Laundry/ Breakroom	LBY-203B	Fabric - Sofa Seat - RENOVATION PROPERTIES ONLY
WALL FINISHES			
VWC-004	Lobby/Accent Vinyl Wallcovering (Behind Front Desk, Walls at Lobby Carpet Inset & Behind Coffee Bar)	LBY-203P	Curved Sofa Throw Pillows - RENOVATION PROPERTIES ONLY
VWC-005	Public Restrooms Vinyl Wallcovering- Optional	LBY-204	C-Table - RENOVATION PROPERTIES ONLY
VWC-008A	Accent Vinyl Wallcovering - Sprout	LBY-205	Business Center - RENOVATION PROPERTIES ONLY
VWC-008B	Accent Vinyl Wallcovering - Sky	BR-201	Lounge Chair (Breakfast Room)- Blue
VWC-008C	Accent Vinyl Wallcovering - Grove	BR-201A	Fabric-Lounge Chair
VWC-008D	Accent Vinyl Wallcovering -Terracotta	BR-202	Communal Table
VWC-008E	Accent Vinyl Wallcovering - Summer	BR-203T	Dining Table (2-Top)
VWC-009	Corridor Wall Vinyl - Upgrade Optional	BR-203B	Dining Table Base (2-Top)
VWC-010	Lobby/Breakfast Room/Laundry room and Fitness Center Wall Vinyl - Optional	BR-204T	Dining Table (4-Top)
WG-001A	Public Space Wall Graphic - Sprout	BR-204B	Dining Table Base (4-Top)
WG-001B	Public Space Wall Graphic - Grove	BR-205T	Dining Table - Bar Height (2-Top)
WG-001C	Public Space Wall Graphic - Sky	BR-205B	Dining Table Bar - Bar Height (2-Top)
WG-001D	Public Space Wall Graphic - Terra Cotta	BR-206T	Settee Tables
WG-001E	Public Space Wall Graphic - Summer	BR-207	Banquette
WG-002A	Public Space Wall Graphic - Sprout (Pool Area)	BR-207A	Fabric - Banquette Back
WG-002B	Public Space Wall Graphic - Grove (Pool Area)	BR-206B	Fabric - Banquette Back
WG-002C	Public Space Wall Graphic - Sky (Pool Area)	BR-208	Dining Chairs
WG-002D	Public Space Wall Graphic - Terra Cotta (Pool Area)	BR-208A	Fabric-Dining Chairs
WG-002E	Public Space Wall Graphic - Summer (Pool Area)	BR-209	Barstools
KNOCK DOWN / PAINT / STAINS			
PT-006	Wall Paint/Texture (Main Lobby/ Breakfast/ Fitness Center/ Market Place/ Vending)	BR-209A	Fabric - Barstools
PT-007	Wall Paint/Texture (Back of House, Back Stairwell, Guest Laundry)	BR-210	Round Side Table- Off White
PT-008	Corridor/ Breakfast Area Columns/ Soffits/ Public Restrooms	BR-211	Accent Lounge Chair (Breakfast Room) - Orange Egg Chair
PT-009	Trim Paint (All Areas)	BR-211A	Fabric- Accent Lounge Chair (Breakfast Room) - Orange Egg Chair
PT-010A	Accent Paint/Texture (Breakfast Room) - Sprout Scheme	BR-212	Shelf- Business Nook/ Coffee Station
PT-010B	Accent Paint/Texture (Breakfast Room) - Sky Scheme	BUS-200	Business Center Ergonomic Chair
PT-010C	Accent Paint/Texture (Breakfast Room) - Grove Scheme	MR-200	Stack Chairs
PT-010D	Accent Paint/Texture (Breakfast Room) - Terra Cotta Scheme	MR-200A	Fabric - Stack Chairs
PT-010E	Accent Paint/Texture (Breakfast Room) - Summer Scheme	MR-201	Meeting Room Ergo Chair
PT-011	Ceiling Paint (All Areas)	MR-202	Meeting Room Conference Table
SURFACE FINISHES			
STN-003	Reception Desk Top & Buffet Counter Top/Public Restroom Vanity Top and Top	MR-203	Meeting Room Folding Table
BR-401	Pendant @ Business Nook/ Coffee Station	FLOOR AND TABLE LIGHTING FIXTURES / BULBS	
COR-400	Corridor Sconce	LBY-300	Floor Lamp
PBR-400	Vanity Light @ Public Restrooms	WALL AND CEILING LIGHTING FIXTURES (HARDWIRED) / BULBS	
ARTWORK & MIRRORS			
LBY-500A	Artwork (Next to Front Desk)	LBY-400	Pendant @ Front Desk
LBY-500B	Artwork (Next to Front Desk)	BR-400	Pendant @ Communal Table
LBY-500C	Artwork (Next to Front Desk)	LAM-001	Laundry, Office, and Work Room Cabinetry/ Countertop Laminate
BR-500A	Artwork (Settee Gallery Wall Artwork)	BACK OF HOUSE	
BR-500B	Artwork (Settee Gallery Wall Artwork)	OFF-200	Ergonomic Chair @ Offices
BR-500C	Artwork (Settee Gallery Wall Artwork)	OFF-201	Office Desk
BR-500D	Artwork (Settee Gallery Wall Artwork)	OFF-202	Office Cabinet Base
BR-500E	Artwork (Settee Gallery Wall Artwork)	OFF-203	Office Cabinet Hutch
BR-500F	Artwork (Settee Gallery Wall Artwork)	OFF-204	Office Guest Chair
BR-500G	Artwork (Settee Gallery Wall Artwork)	OFFICE	
BR-500H	Artwork (Settee Gallery Wall Artwork)	FUL-200	Office Lounge Chair
BR-500I	Artwork (Settee Gallery Wall Artwork)	FUL-201	Office Chair
BR-500J	Mounting Cable (Settee Gallery Wall Artwork)	FUL-202	Umbrella
BR-500K	Artwork (Breakfast Serving Area)	FUL-203	Umbrella base
BR-500L	Artwork (Breakfast Serving Area)	FUL-204	Side Table
BR-500M	Artwork (Breakfast Serving Area)	FUL-205	Table - Sit/Stand
BR-500N	Artwork (Breakfast Serving Area)	FUL-206	Stacking Desk Chair - Optional
BR-500O	Artwork (Breakfast Serving Area)	EQUIPMENT	
BR-500P	Artwork @ Meeting Room	BR-600	Television - 32"
BR-500Q	Artwork @ Meeting Room	BR-600	Television - 32"
BR-500R	Artwork @ Meeting Room	BR-800	Breakfast Media Sign
BR-500S	Artwork @ Meeting Room	BR-900	Front Desk Sign
BR-500T	Artwork @ Meeting Room	BR-900	Signage Package (new construction)
BR-500U	Artwork @ Meeting Room	OPTIONAL	Corner Guard information provided in the back.
BR-500V	Artwork @ Meeting Room		
BR-500W	Artwork @ Meeting Room		
BR-500X	Artwork @ Meeting Room		
BR-500Y	Artwork @ Meeting Room		
BR-500Z	Artwork @ Meeting Room		
BR-500A	Artwork @ Fitness Center		
OFF-600	Artwork @ Offices - Optional		
OFF-700	Artwork @ Offices - Optional		
OFF-800	Artwork @ Offices - Optional		
OFF-900	Artwork @ Offices - Optional		
OFF-902	Artwork @ Offices - Optional		

REFERENCE NUMBER LEGEND
100 Drapery
200 Casegoods / Seating
300 Table & Floor Lamps
400 Wall & Ceiling Light Fixtures
500 Artwork/Mirrors
600 Equipment
700 Accessories
800 Signage

Causing Design & Create items highlighted in yellow.
 items highlighted in grey or **renovation** properties.

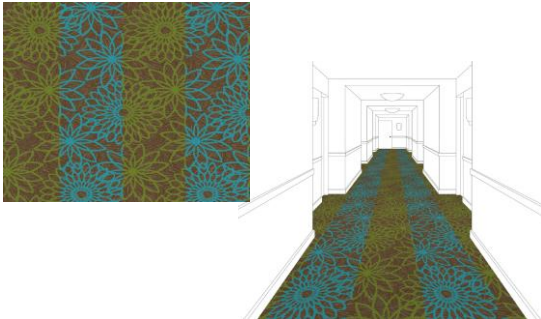
BRAND: Sleep Inn
AREA: Corridor / Lobby Inset
ITEM: Broadloom Carpet and Base

**ITEM #: CPT-002 /
CPTB-002 (Broadloom)**

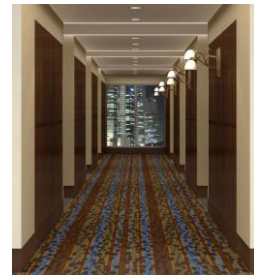
TOTAL WEIGHT 36 oz.
CONSTRUCTION Loop Scroll Tip Shear
WIDTH / SIZE 12 ft.
GAUGE 2E Servo Scroll Loop (Lexmark)
1/2in (Aqua)
YARN CONTENT 100% C.F. Lextron Enviro - Green Solution Dyed Nylon (Lexmark)
Avalar SD Nylon (Aqua)
DYE TECHNIQUE Solution dyed
STITCHES / INCH 12
BACKING Woven Polypropylene
Unitary w/ Actionbac
FINISHED PILE HEIGHT 0.25
REPEAT 36" x 90" (Lexmark)
36" x 39.1" (Aqua)
WALL BASE Johnsonite Traditional Wall Base - 80 Fawn CB
WALL BASE HEIGHT 4"

NOTES 1. Rubber wall base is standard.

APPROVED VENDORS



**MFR: Lexmark Northwest
Hospitality**
Pattern: 1636
Pattern Number: 16617-3

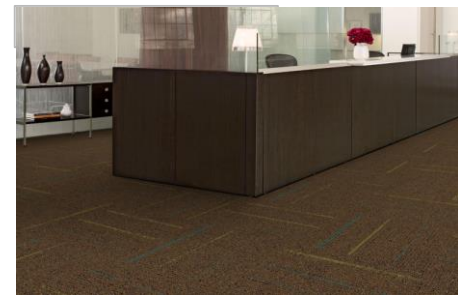


MFR: Aqua Hospitality
Pattern: GR17-3

BRAND: Sleep Inn
AREA: Corridor / Lobby Inset
ITEM: Carpet Tile and Base

**ITEM #: CPT-002 (Tile) /
CPTB-002**

WEIGHT: 15 oz/ yd²
SIZE 19.69" x 19.69"
CONSTRUCTION Tufted Textured Loop
GAUGE 1/12"
YARN CONTENT Post-Consumer Content Type 6,6 Nylon
DYE TECHNIQUE 100% Solution Dye
STITCHES 7 in
BACKING GlasBac
PILE HEIGHT 0.15"
WALL BASE Johnsonite Traditional Wall Base - 80 Fawn CB
WALL BASE HEIGHT 4"
INSTALLATION Corridor - Brick Installation
Lobby - Quarter Turn Installation



APPROVED VENDORS

MFR: Interface Hospitality
Pattern: Sidetrack
Color: 104267 Aztec/ Track

BRAND: Sleep Inn
AREA: Public Space
ITEM: Carpet Pad

ITEM #: CPAD-002

WEIGHT: 32 oz.
THICKNESS 5/16"
DENSITY 8.0 lbs. cu. Ft.
ROLL SIZE 6' x 60" (40SY) / 12' x 60" (80 SY)
TRAFFIC CLASS Heavy
CONTENT 100% Pre-Consumer Synthetic Fiber - Thermal Bonded
TENSILE STRENGTH 233.8 lbs
THERMAL INSULATION 2.12
FLAMILIBILITY ASTM - E662

NOTES 1. Upgrade option available: Hartex Fiberlock



APPROVED VENDORS

MFR: Leggett & Platt
Product: Hartex 32

BRAND: Sleep Inn
Back Of The House/ Back Stairwell /
AREA: Employee Lounge
ITEM: Carpet Tile & Base

**ITEM #: CPT-003 /
CPTB-003 (Tile)**

CONSTRUCTION: Tufted Cut Loop
WIDTH/ SIZE: 19.69" x 19.69"
GAUGE: 5/64 in
YARN CONTENT: Post Consumer Content 6.6 Nylon
DYED TECHNIQUE: 100% Solution Dyed
STITICHES/ INCH: 7.83 / in
FINISHED PILE HEIGHT: .2 in
FLAMMABILITY: (ASTM E648) Class 1
INSTALLATION: Brick Installation
WALL BASE
WALL BASE HEIGHT 4"



APPROVED VENDORS

MFR: Interface Hospitality
Pattern: RMS101 260502-015

BRAND: Sleep Inn
Back Of The House/ Back Stairwell /
AREA: Employee Lounge
ITEM: Carpet - Broadloom

**ITEM #: CPT-003 /
CPTB-003**

WIDTH 12'
WEIGHT 32 oz
BASE COLOR Same as carpet
BASE HEIGHT 4" Bound
CONSTRUCTION Cut/ Loop
DYE TECHNIQUE Solution Dye
YARN CONTENT 100% Nylon
WALL BASE Johnsonite Traditional Wall Base - 63 Burnt Umber B
WALL BASE HEIGHT 4"

NOTES 1. Rubber wall base is standard.



APPROVED VENDORS

MFR: Lexmark Hospitality
Pattern: 1132
Color: 7910A

MFR: Aqua Carpets
Pattern: FP50-7
Color: FP50-7

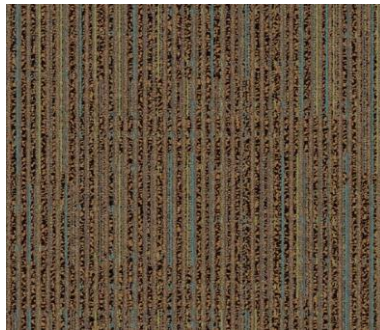
MFR: Clayton Miller
Pattern: CM50500
Color: CM50500

BRAND: Sleep Inn
AREA: Meeting Room
ITEM: Carpet Tile & Base

**ITEM #: CPT-004 /
CPTB-004 (Tile)**

WEIGHT: 15 oz/ yd²
SIZE 19.69" x 19.69"
CONSTRUCTION Tufted Textured Loop
GAUGE 1/12"
YARN CONTENT Post-Consumer Content Type 6,6 Nylon
DYE TECHNIQUE 100% Solution Dye
STITCHES 7 in
BACKING GlasBac
PILE HEIGHT 0.15"
WALL BASE Johnsonite Traditional Wall Base - 80 Fawn CB
WALL BASE HEIGHT 4"

INSTALLATION Quarter Turn Installation



APPROVED VENDORS

MFR: Interface Hospitality
Pattern: Main Line
Color: 104255 Aztec/ Track

BRAND: Sleep Inn
Lobby/Vestibule/ Community Room /
AREA: Breakfast Serving Area / Vending
ITEM: Ceramic Tile & Base (Optional)

ITEM #: CT-002 /
CTB-002

SIZE 6x24
THICKNESS 3/8 inch
INSTALLATION PATTERN Running Bond (Tile to run horizontal with front desk.)
BASE SIZE 4" x 24" Bullnose
BASE STYLE Bullnose top edge
GROUT MFR Laticrete or Mapei
GROUT COLOR match Laticrete Perma Color Mocha #35
GROUT SPACING 1/8"
SLIP RESISTANCE meets or exceeds .60 COF and .42 DCOF wet
WATER ABSORPTION less than .036%
BREAKING STRENGTH exceeds 500 PSI



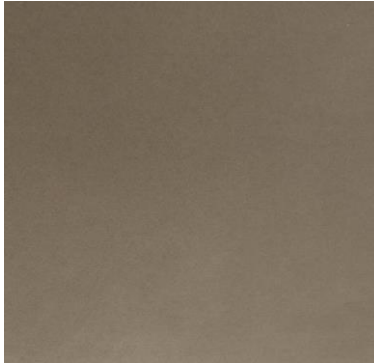
APPROVED VENDORS

MFR: Granit Flandre
Pattern: Legno Bruno IG0624118

BRAND: Sleep Inn
Public Restrooms/Laundry Room/
Employee Restroom/ 2-3 Floor Landing
AREA: Flooring
ITEM: Ceramic Tile

ITEM #: CT-003/ CTB-003

SIZE 12x12"x 5/16"
FINISH Matte
INSTALLATION PATTERN straight lay stack installation
BASE SIZE 3x24" bullnose
BASE STYLE bullnose top edge
GROUT MFR Laticrete or Mapei
GROUT COLOR match Laticrete Perma Color Mocha #35
GROUT SPACING 1/8"
SLIP RESISTENCE DCOF .45 Wet
WATER ABSORPTION Less than .1% - exceeds ASTM C373: .5% Maximum
BREAKING STRENGTH Greater than 500lbf - exceeds ASTM C648 must be 250 lbf or greater



APPROVED VENDORS

MFR: Graniti Fiandre
Collection: French Clay
Color: Cafe'

BRAND: Sleep Inn
AREA: Pool Floor & Wall
ITEM: Ceramic Tile & Base

ITEM #: CT-004/ CTB-004
CT-005 / CTB-005

12" x 24" x 3/8" (Wall) Quarzite Alpes
SIZE 12" x 12" x 3/8" (Floor) Quarzite Alpes
FINISH textured R11
INSTALLATION PATTERN straight lay stack installation
BASE SIZE 4x12"
BASE STYLE Bullnose
GROUT MFR Laticrete of Mapei
GROUT COLOR Laticrete Permacolor Sterling Silver #78
GROUT SPACING 1/8"
SLIP RESISTENCE DCOF .72 wet
WATER ABSORPTION Less than .1% - exceeds ASTM C373: .5% Maximum
BREAKING STRENGTH Greater than 500lbf - exceeds ASTM C648 must be 250 lbf or greater



APPROVED VENDORS

MFR: Graniti Fiandre
Item: Quarzite Alpes R11

BRAND: Sleep Inn
AREA: Pool
ITEM: Ceramic Tile - Pool Accent Wall Tile

ITEM #: CT-006

SIZE 3" x 24"x 5/16"

FINISH honed

INSTALLATION PATTERN straight lay stack installation

GROUT MFR Laticrete or Mapei

GROUT COLOR Laticrete Perma Color Sterling Silver #78

GROUT SPACING 1/8"

WATER ABSORPTION Less than .1% - exceeds ASTM C373: .5% Maximum

BREAKING STRENGTH Greater than 500lbf - exceeds ASTM C648 must be 250 lbf or greater

NOTES 1. Please note accent wall tile is 1/16" thinner than the field tile.
If necessary use mortar for flush application.



APPROVED VENDORS

MFR: Graniti Fiandre
Pattern: Shellstone
Color: Shellearth Honed

BRAND: Sleep Inn
AREA: Pool Water Line
ITEM: Ceramic Tile

ITEM #: CT-008

SIZE 8" x 8"x 1/4"

FINISH gloss

INSTALLATION PATTERN straight lay pool water line

GROUT MFR Laticrete or Mapei

GROUT COLOR Laticrete Spectralock Pro Premium Mocha #35



APPROVED VENDORS

MFR: Graniti Fiandre
Pattern: Maiolica
Color: Corda
Item #:563203

BRAND: Sleep Inn

ITEM #: LVT-001

Lobby/ Vestibule / Community Room and
Vending / Elevator Lobby / Breakfast

AREA: Area / Market Place

ITEM: Luxury Vinyl Tile

SIZE: Various widths and lengths - refer to vendor matrix. Minimum width is 4"

THICKNESS: Minimum thickness 2.5mm

WEAR LAYER: Minimum 20mil or 0.55mm

FINISH: Commercial grade coating preferred

INSTALLATION: 1. Glue down
2. Click and float
3. Perimeter Adhered

BACKING: Commercial backing including Cork and PVC

NOTES: 1. Must meet VCT ASTM IIC>55 or STC>67

2. Must meet VCT ASTM 1066

3. Must meet ASTM D2047 > 0.6 wet, 0.6 dry

4. For glue down products consult the supplier for adhesive information + installation.

5. For acoustic underlayment products consult specific manufacturer for products.

APPROVED VENDORS



MFR: Porcelanosa

Product: LinkFloor Hotel Air.
Color: Ash



MFR: Mohawk

Pattern: Trenta Wood
Color: Mink 858

BRAND: Sleep Inn
AREA: Fitness Center - Optional
ITEM: Vinyl Tile

ITEM #: VT-001

SIZE Roll size 6'7" x 65'7"
MATERIAL Heterogeneous resilient floor covering with glass fiber reinforcements.
BACKING Acoustic
SURFACE PVC wear layer with XPM®, UV-cured, PUR reinforced top surface
WEAR LAYER THICKNESS 0.8mm
OVERALL THICKNESS 4.0mm
THERMAL RESISTANCE DIN EN ISO 23999
INSTALLATION Glue Down



APPROVED VENDORS

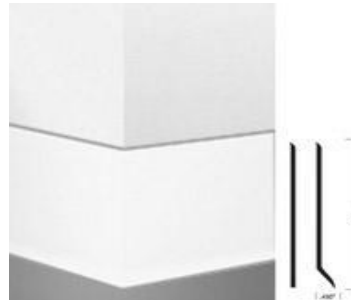
MFR: MATS Inc.
Product: Debolon Renew R450 Silence
Color: U105-01

BRAND: Sleep Inn
Lobby/Vestibule/ Community Room and
Vending/ Elevator Lobby/ Breakfast Area
/ Food Prep/ Back of House Laundry/
AREA: Breakroom
ITEM: Rubber Base

ITEM #: RCB-001

SIZE: 4" H x 1/8" Thick
PRODUCT: Traditional Wall Base -Standard Toe
COLOR: #80 Fawn CB

NOTES: 1. Rubber Base is the standard option.
2. Please refer to the architectural drawings for locations
and transitions.



APPROVED VENDORS

MFR: Johnsonite
Product: Traditional Wall Base
Color: 80 Fawn CB

BRAND: Sleep Inn
AREA: Fitness Area
ITEM: Rubber Base

ITEM #: RCB-002

SIZE: 4" H x 1/8" Thick
PRODUCT: Traditional Wall Base -Standard Toe
COLOR: #32 Pebble WG

NOTES: 1. Rubber Base is the standard option.
2. Please refer to the architectural drawings for locations and transitions.



APPROVED VENDORS

MFR: Johnsonite
Product: Traditional Wall Base
Color: 32 Pebble WG

BRAND: Sleep Inn

ITEM #: RCB-003

Back Of The House/ Back Stairwell /

AREA: Employee Lounge

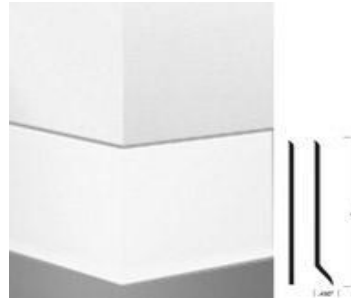
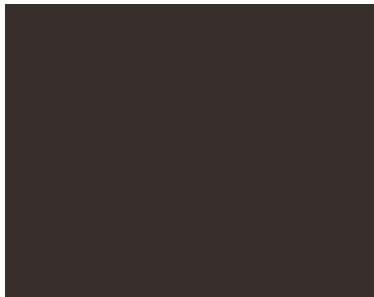
ITEM: Rubber Base

SIZE: 4" H x 1/8" Thick

PRODUCT: Traditional Wall Base -Standard Toe

COLOR: #63 Burnt Umber B

- NOTES:** 1. Rubber Base is the standard option.
2. Please refer to the architectural drawings for locations and transitions.



APPROVED VENDORS

MFR: Johnsonite

Product: Traditional Wall Base

Color: 63 Burnt Umber B

BRAND: Sleep Inn
Food Prep/ Back of House Laundry/
AREA: Breakroom
ITEM: Vinyl Flooring

ITEM #: VCT-001

CONSTRUCTION BioBased Tile
THICKNESS: 1/8"
WEAR LAYER THICKNESS 1/8"
FINISH Fast Start Factory Finish
TILE SIZE 12" X 12"
CONTENT: 100% Synthetic Fiber
RESISTANCE TO HEAT Exceeds ASTM F 1514
INSTALLATION Full Spread Adhesives - S-525 High- Moisture, S-700 Thin Spread



APPROVED VENDORS

MFR: Armstrong Commercial Floors

Collections: Migrations

Color: T3509 Mushroom Beige

BRAND: Sleep Inn
Behind Front Desk, Lobby Bench Wall,
AREA: Public Restroom & Behind Coffee Bar
ITEM: Accent Wall Vinyl Wallcovering

ITEM #: VWC-004
VWC-005

WEIGHT / TYPE 20 oz/yd, Type II
WIDTH 54"
PATTERN MATCH Random reversible
FIRE RATING Class A
TENSILE STRENGTH 50 warp/ 55 fill
ROLL LENGTH 30yds

- NOTES:**
1. See architectural drawings for locations.
 2. Upgraded option for public restrooms. Wall vinyl is not required.
 3. Bolt comes in 30 yd. minimum.



APPROVED VENDORS

MFR: MDC Wallcovering
Pattern: CHO516 Chalk

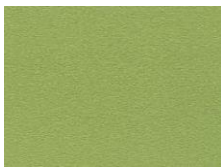
BRAND: Sleep Inn
AREA: Public Space
ITEM: Accent Vinyl Wallcovering

ITEM #: VWC-008

TYPE II
WEIGHT 20/21 oz.
FABRIC Q185 WW Heavy Sands
WIDTH 52/54"

- NOTES**
1. Wall vinyl is an upgrade option from the knockdown.
 2. Wall vinyl cannot be used on the graphic wall.
 3. 15 oz. is available as a custom for the guestroom with a 1500 yards minimum order.

APPROVED VENDORS



VWC-008A - Sprout
MFR: US Vinyl
Product: CH-VS-7354/21
Color: Sprout (Tansy Green)

MFR Rigo Wallcovering
Product: SI-424
Color: Sprout (Tansy Green)



VWC-008B - Sky
MFR: US Vinyl
Product: CH-VS-7349/21
Color: Sky (Moody Blue)

MFR: Rigo Wallcovering
Product: CHS-1317
Color: Sky (Moody Blue)

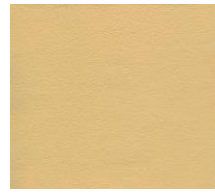


VWC-008C - Grove
MFR: US Vinyl
Product: CH-VS-7355/21
Color: Grove (Artichoke)

MFR: Rigo Wallcovering
Product: CHS-1315
Color: Grove (Artichoke)

VWC-008D - Terracotta
MFR: US Vinyl
Product: CH-VS-7353/21
Color: Terracotta (Earthen Jug)

MFR: Rigo Wallcovering
Product: CH-VS-7353/21
Color: Terracotta (Earthen Jug)



VWC-008E - Summer
MFR: US Vinyl
Product: CH-VS-7348/21
Color: Summer (Blonde)

MFR: Rigo Wallcovering
Product: CH-VS-7348/21
Color: Summer (Blonde)

BRAND: Sleep Inn
AREA: Corridor
ITEM: Wall Vinyl - Upgrade Option

ITEM #: VWC-009

WIDTH 52/54"
WEIGHT 20 oz.
TYPE II
FABRIC Q185 WW Heavy Sands

NOTES 1. Wall vinyl is not required in the corridors. This is an upgrade option.



APPROVED VENDORS

MFR: MDC Wallcovering
Pattern: CHO515 Stone

MFR: U.S. Vinyl
Pattern: CH-VS-7350/21

BRAND: Sleep Inn
Lobby / Breakfast Room / Laundry Room
AREA: and Fitness Cener (Optional)
ITEM: Wall Vinyl - Option

ITEM #: VWC-010

WIDTH 52/54"
WEIGHT 20 oz
TYPE II
FABRIC Q185 WW Heavy Sands

NOTES 1. Wall vinyl is not required in the corridors. This is an upgrade option.



APPROVED VENDORS

MFR: MDC Wallcovering
Pattern: CHO517 Pumice

MFR: Rigo Wallcovering
Pattern: CHS-1314

BRAND: Sleep Inn
AREA: Lobby
ITEM: Wall Graphics - Sprout

ITEM #: WG-001A

Option 1 - Smooth Texture/ Paint/ Graphic

FILM COLOR 7525 - 10 White

- NOTES**
1. No substitutions allowed. Required for new construction and existing properties per brand standards.
 2. Painted Wall. See drawings for locations. All final locations to be determined by choice Hotel Interior Design. Refer to Vomela Instruction for proper sub straight preparation.
 3. Refer to below image for graphic only. Wall color will vary slightly in person.



MFR: Vomela
ITEM: 3M™ SCOTCHCAL™
ELECTROCUT™ FILM-
Provided VOMEL A

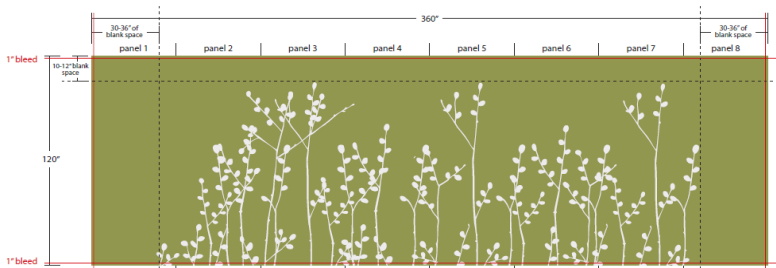
Option 2 - Wall Vinyl Panels

PANTONE COLOR Pantone Blanc de Blanc- 11-4800-TPX
WALL COLOR Sherwin Williams: Tansy Green SW6424

PANEL DIMENSIONS 45"W X 120"H

TEXTURE/ GROUND Suede

- NOTES**
1. No substitutions allowed. Required for new construction and existing properties per brand standards.
 2. Wall Vinyl. See drawings for locations. All final locations to be determined by choice Hotel Interior Design.
 3. Refer to below image for graphic only. Wall color will vary slightly in person.



MFR: MDC Wallcovering
ITEM: CHO500 - Sprout Lobby

BRAND: Sleep Inn
AREA: Lobby
ITEM: Wall Vinyl - Grove

ITEM #: WG-001B

Option 1 - Smooth Texture/ Paint/ Graphic

FILM COLOR 7725-0183 Dark Green

NOTES 1. No substitutions allowed. Required for new construction and existing properties per brand standards.

2. Painted Wall. See drawings for locations. All final locations to be determined by choice Hotel Interior Design. Refer to Vomela Instruction for proper sub straight preparation.

3. Refer to below image for graphic only. Wall color will vary slightly in person.



MFR: Vomela
ITEM: 3M™ SCOTCHCAL™
ELECTROCUT™ FILM-
Provided VOMELA

Option 2 - Wall Vinyl Panels

PANTONE COLOR Pantone Demitasse- 19-0712-TPX

WALL COLOR Sherwin Williams: Earthen Jug- SW7703

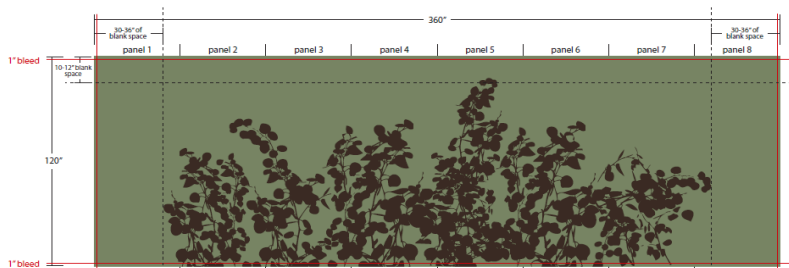
PANEL DIMENSIONS 45"W X 120"H

TEXTURE/ GROUND Suede

NOTES 1. No substitutions allowed. Required for new construction and existing properties per brand standards.

2. Wall Vinyl. See drawings for locations. All final locations to be determined by choice Hotel Interior Design.

3. Refer to below image for graphic only. Wall color will vary slightly in person.



MFR: MDC Wallcovering
ITEM: CHO502-Grove Lobby

BRAND: Sleep Inn
AREA: Lobby
ITEM: Wall Vinyl - Sky

ITEM #: WG-001C

Option 1 - Smooth Texture/ Paint/ Graphic

FILM COLOR 7725-11 Pearl Gray

- NOTES**
1. No substitutions allowed. Required for new construction and existing properties per brand standards.
 2. Painted Wall. See drawings for locations. All final locations to be determined by choice Hotel Interior Design. Refer to Vomela Instruction for proper sub straight preparation.
 3. Refer to below image for graphic only. Wall color will vary slightly in person.



MFR: Vomela
ITEM: 3M™ SCOTCHCAL™
ELECTROCUT™ FILM-
Provided VOMELA

Option 2 - Wall Vinyl Panels

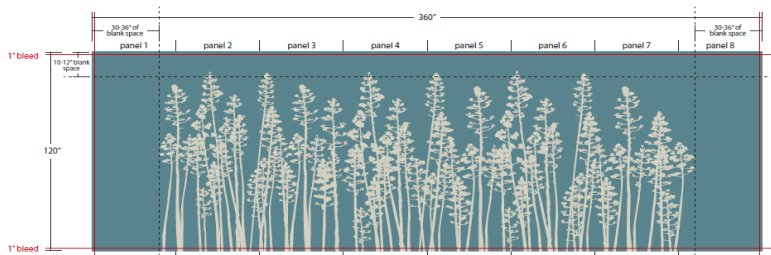
PANTONE COLOR Silver Birch- 13-4403 TPX

WALL COLOR Sherwin Williams: Moody Blue SW6221

PANEL DIMENSIONS 45"W X 120"H

TEXTURE/ GROUND Suede

- NOTES**
1. No substitutions allowed. Required for new construction and existing properties per brand standards.
 2. Wall Vinyl. See drawings for locations. All final locations to be determined by choice Hotel Interior Design.
 3. Refer to below image for graphic only. Wall color will vary slightly in person.



MFR: MDC Wallcovering
ITEM: CHO504- Sky Lobby

BRAND: Sleep Inn
AREA: Lobby
ITEM: Wall Vinyl - Terra Cotta

ITEM #: WG-001D

Option 1 - Smooth Texture/ Paint/ Graphic

FILM COLOR 7725-19 Mahogany

- NOTES**
1. No substitutions allowed. Required for new construction and existing properties per brand standards.
 2. Painted Wall. See drawings for locations. All final locations to be determined by choice Hotel Interior Design. Refer to Vomela Instruction for proper sub straight preparation.
 3. Refer to below image for graphic only. Wall color will vary slightly in person.



MFR: Vomela
ITEM: 3M™ SCOTCHCAL™
ELECTROCUT™ FILM-
Provided VOMELA

Option 2 - Wall Vinyl Panels

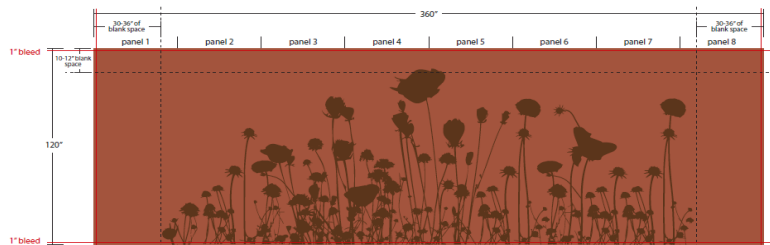
PANTONE COLOR Pantone Demitasse- 19-0712-TPX

WALL COLOR Sherwin Williams: Earthen Jug- SW7703

PANEL DIMENSIONS 45"W X 120"H

TEXTURE/ GROUND Suede

- NOTES**
1. No substitutions allowed. Required for new construction and existing properties per brand standards.
 2. Wall Vinyl. See drawings for locations. All final locations to be determined by choice Hotel Interior Design.
 3. Refer to below image for graphic only. Wall color will vary slightly in person.



MFR: MDC Wallcovering
ITEM: CHO501 - Terra Cotta Lobby

BRAND: Sleep Inn
AREA: Lobby
ITEM: Wall Vinyl - Summer

ITEM #: WG-001E

Option 1 - Smooth Texture/ Paint/ Graphic

FILM COLOR 7725-0311 Gold

- NOTES**
1. No substitutions allowed. Required for new construction and existing properties per brand standards.
 2. Painted Wall. See drawings for locations. All final locations to be determined by choice Hotel Interior Design. Refer to Vomela Instruction for proper sub straight preparation.
 3. Refer to below image for graphic only. Wall color will vary slightly in person.



MFR: Vomela
ITEM: 3M™ SCOTCHCAL™
ELECTROCUT™ FILM-
Provided VOMELA

Option 2 - Wall Vinyl Panels

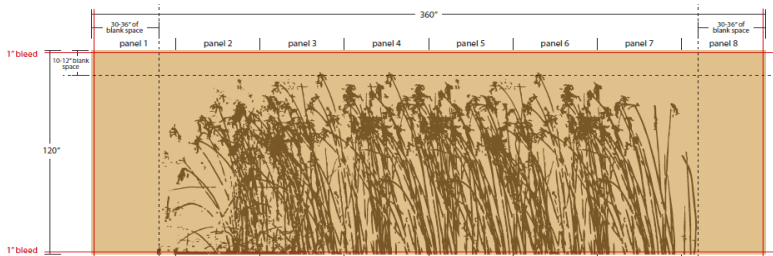
PANTONE COLOR Pantone Butternut -18-0830-TPX

WALL COLOR Sherwin Williams: Blonde SW6128

PANEL DIMENSIONS 45"W X 120"H

TEXTURE/ GROUND Suede

- NOTES**
1. No substitutions allowed. Required for new construction and existing properties per brand standards.
 2. Wall Vinyl. See drawings for locations. All final locations to be determined by choice Hotel Interior Design.
 3. Refer to below image for graphic only. Wall color will vary slightly in person.



MFR: MDC Wallcovering
ITEM: CHO503 - Summer Lobby

BRAND: Sleep Inn
AREA: Pool Area
ITEM: Wall Vinyl Graphic - Sprout

ITEM #: WG-002A

Option 1 - Smooth Texture/ Paint/ Graphic

FILM COLOR 7725-0349 Gray
WALL COLOR Dover White SW6385

- NOTES**
1. No substitutions allowed.
 2. Painted Wall. See drawings for locations. All final locations to be determined by choice Hotel Interior Design. Refer to Vomela Instruction for proper sub straight preparation.

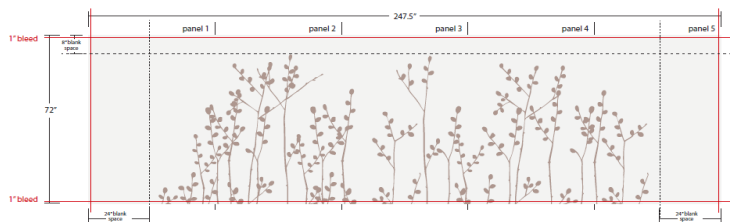


MFR: Vomela
ITEM: 3M™ SCOTCHCAL™
ELECTROCUT™ FILM-
DESIGNED BY VOMELA

Option 2 - Wall Vinyl Panels

PANTONE Atmosphere- 16-1406 TPX
PANTONE Bright White -11-0601 TPX
PANEL DIMENSIONS 49.5"W x 72"H
TEXTURE/ GROUND Suede

- NOTES**
1. Contact the vendor for panel maps and details.
 2. Wall Vinyl. See drawings for locations. All final locations to be determined by choice Hotel Interior Design.



MFR: MDC Wallcovering
ITEM: CH0510 - Sprout Pool

BRAND: Sleep Inn
AREA: Pool Area
ITEM: Wall Vinyl Graphic - Grove

ITEM #: WG-002B

Option 1 - Smooth Texture/ Paint/ Graphic

FILM COLOR 7725-0349 Gray

WALL COLOR Dover White SW6385

- NOTES**
1. No substitutions allowed.
 2. Painted Wall. See drawings for locations. All final locations to be determined by choice Hotel Interior Design. Refer to Vomela Instruction for proper sub straight preparation.

MFR: Vomela
ITEM: 3M™ SCOTCHCAL™
ELECTROCUT™ FILM-
Dyed VOMELA



Option 2 - Wall Vinyl Panels

PANTONE Atmosphere- 16-1406 TPX

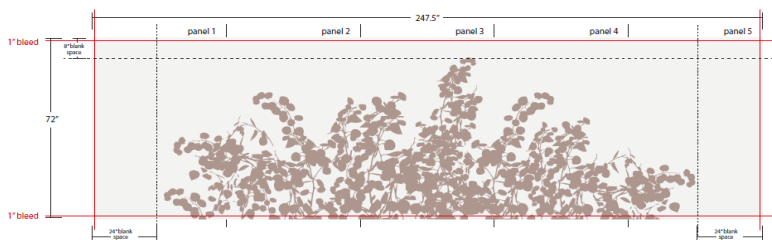
PANTONE Bright White -11-0601 TPX

PANEL DIMENSIONS 49.5"W x 72"H

TEXTURE/ GROUND Suede

- NOTES**
1. Contact the vendor for panel maps and details.
 2. Wall Vinyl. See drawings for locations. All final locations to be determined by choice Hotel Interior Design.

MFR: MDC Wallcovering
ITEM: CHO512-Grove Pool



BRAND: Sleep Inn
AREA: Pool Area
ITEM: Wall Vinyl Graphic - Sky

ITEM #: WG-002C

Option 1 - Smooth Texture/ Paint/ Graphic

FILM COLOR 7725-0349 Gray
WALL COLOR Dover White SW6385

- NOTES**
1. No substitutions allowed.
 2. Painted Wall. See drawings for locations. All final locations to be determined by choice Hotel Interior Design. Refer to Vomela Instruction for proper sub straight preparation.

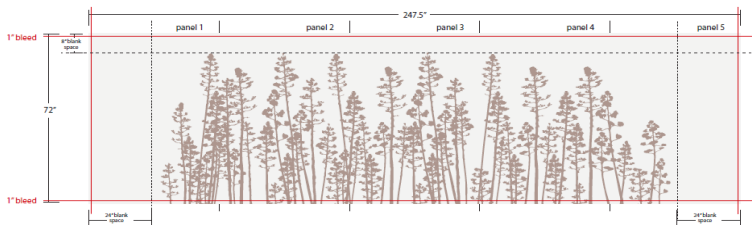


MFR: Vomela
ITEM: 3M™ SCOTCHCAL™
ELECTROCUT™ FILM-
Resistant VOMELA

Option 2 - Wall Vinyl Panels

PANTONE Atmosphere- 16-1406 TPX
PANTONE Bright White -11-0601 TPX
PANEL DIMENSIONS 49.5"W x 72"H
TEXTURE/ GROUND Suede

- NOTES**
1. Contact the vendor for panel maps and details.
 2. Wall Vinyl. See drawings for locations. All final locations to be determined by choice Hotel Interior Design.



MFR: MDC Wallcovering
ITEM: CHO514-Sky Pool

BRAND: Sleep Inn
AREA: Pool Area
ITEM: Wall Vinyl Graphic - Terracotta

ITEM #: WG-002D

Option 1 - Smooth Texture/ Paint/ Graphic

FILM COLOR 7725-0349 Gray
WALL COLOR Dover White SW6385

- NOTES**
1. No substitutions allowed.
 2. Painted Wall. See drawings for locations. All final locations to be determined by choice Hotel Interior Design. Refer to Vomela Instruction for proper sub straight preparation.

MFR: Vomela
ITEM: 3M™ SCOTCHCAL™
ELECTROCUT™ FILM-
Produced by VOMELA

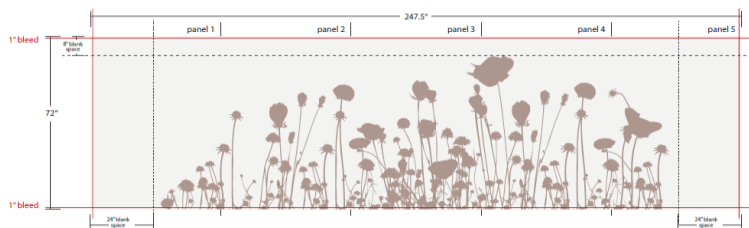


Option 2 - Wall Vinyl Panels

PANTONE Atmosphere- 16-1406 TPX
PANTONE Bright White -11-0601 TPX
PANEL DIMENSIONS 49.5"W x 72"H
TEXTURE/ GROUND Suede

- NOTES**
1. Contact the vendor for panel maps and details.
 2. Wall Vinyl. See drawings for locations. All final locations to be determined by choice Hotel Interior Design.

MFR: MDC Wallcovering
ITEM: CHO511- Terracotta Pool



BRAND: Sleep Inn
AREA: Pool Area
ITEM: Wall Vinyl Graphic - Summer

ITEM #: WG-002E

Option 1 - Smooth Texture/ Paint/ Graphic

FILM COLOR 7725-0349 Gray
WALL COLOR Dover White SW6385

- NOTES**
1. No substitutions allowed.
 2. Painted Wall. See drawings for locations. All final locations to be determined by choice Hotel Interior Design. Refer to Vomela Instruction for proper sub straight preparation.

MFR: Vomela
ITEM: 3M™ SCOTCHCAL™
ELECTROCUT™ FILM-
DESIGNED BY VOMELA

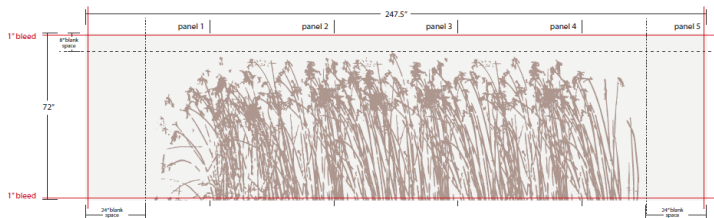


Option 2 - Wall Vinyl Panels

PANTONE Atmosphere- 16-1406 TPX
PANTONE Bright White -11-0601 TPX
PANEL DIMENSIONS 49.5"W x 72"H
TEXTURE/ GROUND Suede

- NOTES**
1. Contact the vendor for panel maps and details.
 2. Wall Vinyl. See drawings for locations. All final locations to be determined by choice Hotel Interior Design.

MFR: MDC Wallcovering
ITEM: CHO513 -Summer Pool



BRAND: Sleep Inn
Main Lobby/ Breakfast/ Fitness Center/
AREA: Market Place/ Vending
ITEM: Wall Paint / Texture

ITEM #: PT-006

FINISH Eggshell

TEXTURE MFR U.S. Texture

TEXTURE FINISH Wall and Ceiling: Smooth finish (Main Lobby, Breakfast Area, Market Place/
Vending)

Wall: Orange Peel (Fitness Center)

Ceiling: Smooth Finish or Acoustical Tegular Ceiling (24" x 24") (Fitness Center)

NOTES 1. Approved 100% Acrylic Wall Texture Only



APPROVED VENDORS

MFR: Sherwin Williams
Color: Loggia
Color: SW7506

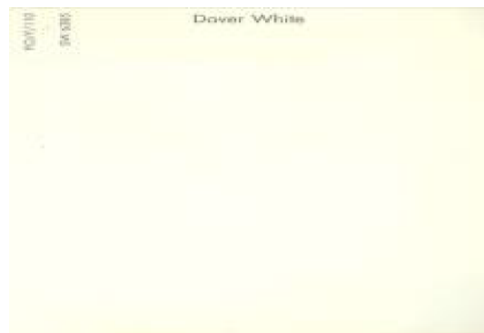
MFR: PPG Corporate
Color: Stonington
Color: 416-4

BRAND: Sleep Inn
Back of House, Back Stairwell, Guest
AREA: Laundry, Kitchen, Pool
ITEM: Wall Paint / Texture

ITEM #: PT-007

FINISH Eggshell
TEXTURE MFR U.S. Texture
TEXTURE FINISH Wall and Ceiling: Smooth finish (Pool)
Wall: Orange Peel (Back of House, Back Stairwell, Guest Laundry, Kitchen)
Ceiling: Smooth Finish or Acoustical Tegular Ceiling (24" x 24") (Back of House, Back Stairwell, Guest Laundry, Kitchen)

NOTES 1. Approved 100% Acrylic Wall Texture Only



APPROVED VENDORS

MFR: Sherwin Williams
Color: Dover White
Color #: SW6385

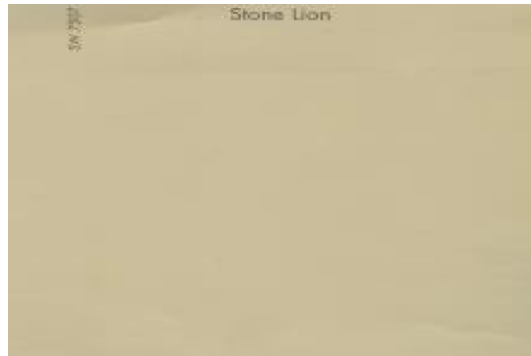
MFR: PPG Corporate
Color: Turban Shell
Color #: 116-1

BRAND: Sleep Inn
Corridor/ Breakfast Area Columns/
AREA: Soffits/ Public Restrooms
ITEM: Wall Paint / Texture

ITEM #:PT-008

FINISH Eggshell
TEXTURE MFR U.S. Texture
TEXTURE FINISH Wall and Ceiling: Smooth finish (Corridor/ Breakfast Area Columns/ Soffits/
Public Restrooms)

NOTES 1. Approved 100% Acrylic Wall Texture Only



APPROVED VENDORS

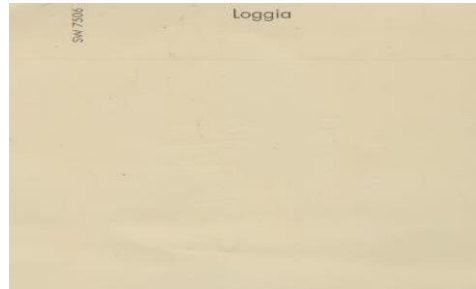
MFR: Sherwin Williams
Color: Stone Lion
Color: SW7507

MFR: PPG Corporate
Color: Sharkskin
Color: 513-5

BRAND: Sleep Inn
AREA: All Areas
ITEM: Trim Paint (All Areas)

ITEM #: PT-009

FINISH Semigloss
TEXTURE MFR U.S. Texture
NOTES 1. Approved 100% Acrylic Wall Texture Only



APPROVED VENDORS

MFR: Sherwin Williams
Color: Loggia
Color: SW7506

MFR: PPG Corporate
Color: Stonington
Color: 416-4

BRAND: Sleep Inn
AREA: Breakfast Room
ITEM: Accent Paint / Texture

ITEM #: PT-010

FINISH Eggshell
TEXTURE MFR U.S Texture
TEXTURE FINISH Wall and Ceiling: Smooth finish (Breakfast Area)

- NOTES**
1. Approved 100% acrylic wall texture only.
 2. Locations will differ based on generation of hotel. Accent paint location to be determined by Choice Hotels Interior Design.



PT-010A - Sprout
MFR: Sherwin Williams
Color: Tanzy Green
Color #: SW6424

MFR: PPG Co
Color: Dill
Color #: 310-5



PT-010B - Sky
MFR: Sherwin Williams
Color: Moody Blue
Color #: SW6221

MFR: PPG Corporate
Color: Aqua Smoke
Color #: 556-5



PT-010C - Grove
MFR: Sherwin Williams
Color: Artichoke
Color #: SW6179

MFR: PPG Corporate
Color: Hidden Meadow
Color #: 408-6

PT-010D - Terracotta
MFR: Sherwin Williams
Color: Earthen Jug
Color #: SW7703

MFR: PPG Corporate
Color: Fragrant Cloves
Color #: 225-7



PT-010E - Summer
MFR: Sherwin Williams
Color: Blonde
Color #: SW6128

MFR: PPG Corporate
Color: True Blonde
Color #: ATC-26

BRAND: Sleep Inn
AREA: All Areas
ITEM: Ceiling Paint

ITEM #: PT-011

FINISH Semigloss

TEXTURE FINISH Public Space (front desk, lobby, breakfast, etc.) ceilings: Smooth finish.
Public Space (guest laundry, vending, meeting room, guest room corridor, exercise room, etc.) Ceiling – Smooth finish or acoustical teguler ceiling (24"x24")



APPROVED VENDORS

MFR: Sherwin Williams
Color: Ceiling Bright White
Color #: SW7007

MFR: PPG Corporate
Color: Shooting Star
Color #: 551-1

BRAND: Sleep Inn
Above the Lobby Bench/ Along the
AREA: Breakfast Seating Area Walls
ITEM: Wood Stain

ITEM #: ST-010

- NOTES**
1. To match Wilsonart Hemlock 11067K-07 or Formica Carbon Ash 5263 laminate.
 2. Horizontal Placement



APPROVED VENDORS

MFR: Wilsonart
Style: Hemlock
Color: 11067K-07

MFR: Formica
Style: Carbon Ash
Color: 5263

BRAND: Sleep Inn
AREA: Front Desk Upper Counter
ITEM: Stone Quartz Countertop

ITEM #: STN-003



APPROVED VENDORS

MFR: Wilsonart
Item #: Q1012 (1) Lorraine

BRAND: Sleep Inn

ITEM #: STN-004

AREA: Front Desk Lower Countertop, Breakfast
Area, Business Center, Coffee Station

ITEM: Stone Quartz Countertop



APPROVED VENDORS

MFR: Wilsonart
Style: Alamosa
Color: Q1011

BRAND: Sleep Inn
AREA: Laundry, Office, and Work Room
ITEM: Laminate - Cabinetry Top & Face

ITEM #: LAM-001

- NOTES**
1. To match Formica Earthen Twill 88285/58
 2. Horizontal Placement



APPROVED VENDORS

MFR: Formica
Color: Earthen Twill 8828-58

BRAND: Sleep Inn
AREA: Front Desk - Lower Insert Face
ITEM: Laminate

ITEM #: LAM-002

NOTE 1. Horizontal placement



APPROVED VENDORS

MFR: Wilsonart
Item: Studio Teak 7960K-18

MFR: Formica
Item: 9283-NG Walnut Riftwood

INSERT FACE

BRAND: Sleep Inn
Front Desk Trim, Breakfast Cabinets,
AREA: Coffee Bar Cabinets
ITEM: Laminate

ITEM #: LAM-003

- NOTE** 1. To match Wilsonart Hemlock 11067K-07 or Formica Carbon Ash 5263 laminate.
2. Horizontal Placement



Trim
Stained wood to match:
Wilsonart: Hemlock

APPROVED VENDORS

MFR: Wilsonart
Style: Hemlock
Color: 11067K-07

MFR: Formica
Style: Carbon Ash
Color: 5263

BRAND: Sleep Inn
AREA: Front Desk Upper Insert
ITEM: Laminate

ITEM #: LAM-004

NOTE 1. Horizontal placement



APPROVED VENDORS

MFR: Wilsonart
Item #: 6252 Matte Natural Aluminum

MFR: Formica
Item #: M5311 Brushed Argent

BRAND: Sleep Inn
AREA: Breakfast Room
ITEM: Cabinet Hardware

ITEM #: HDW-001

DEPTH 37mm
HEIGHT 14mm
THREAD M4
MATERIAL Stainless steel: Grade 304
COLOR Brushed Nickel
FINISH Matt
FINISH CODE 100SS47



APPROVED VENDORS

MFR: Hafele
Model: 117.05.600

BRAND: Sleep Inn
AREA: Lobby / Breakfast Area
ITEM: Roller Shade

ITEM #: X-100

CONTENT 36% Fiberglass, 64% Vinyl
SIZE Field Verify
DRAW Manual
MOUNT Inside Mount
FABRIC WIDTH 98"
WEIGHT 11.3 oz/sqyd
THICKNESS 0.020"
OPENESS 5%
FASCIA Bronze



APPROVED VENDORS

MFR: Fabtex
Pattern: M-Screen Deco
Color: Flagstone

BRAND: Sleep Inn
AREA: Fitness Room, Offices, & Pool Area
ITEM: Wood Blinds

ITEM #: X-101

STYLE 2" Premium Faux Wood
FINISH Painted
MOUNT Inside Mount
OPERATOR Standard controls, braided ladders



APPROVED VENDORS

MFR: Fabtex
Color: Alabaster White

BRAND: Sleep Inn
AREA: Meeting Room

ITEM #: MR-102

ITEM: Traversing Blackout Drapery (Fabrication)- Optional

TREATMENT STYLE: Pinch Pleat, One Way Draw, Traversing Blackout Drapery

SIZE: Field Verify

FULLNESS: 200%

FABRIC: Richloom's Courtship, color Raffia (NFPA 701)

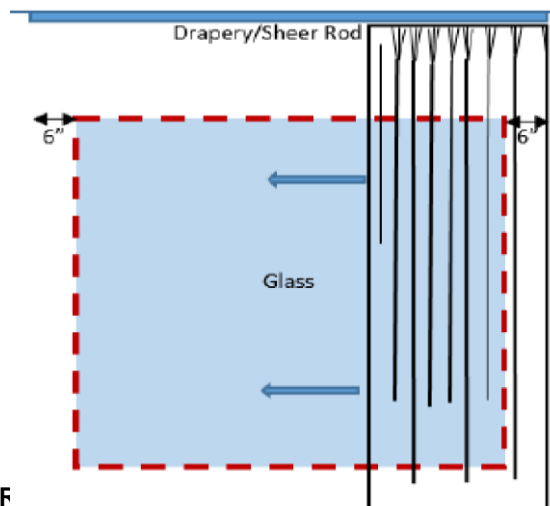
SIDE HEMS: 1.5" double turn

BOTTOM HEM: 1.5" double turn

HARDWARE: Ceiling and wall mounted white architectural track available

SIZING: Hardware track to extend 6" beyond either side of window opening

- NOTES:**
1. Grommet/stiffener on leading edge for baton attachment to face.
 2. Blackout to be furnished with 3" return on outboard edge of panel to meet the window wall and block the light.
 3. Pins to be set at a height to conceal the drapery rod when closed.
 4. Blackout drapery to hang behind sheer.
 5. Std. White Fiberglass baton 60" AFF max
 6. Please order samples from all approved vendors, as there are slight pattern/ color variances.



APPROVED VENDOR

MFR: Fabtex
Model # SID18B

BRAND: Sleep Inn
AREA: Corridor
ITEM: Traversing Sheer (Fabrication)

ITEM #: COR-100

TREATMENT STYLE: Pinch Pleat, One Way Draw, Traversing Sheer

SIZE: Field Measure

FULLNESS: 200%

FABRIC: Richloom's Exquisite, color Linen (NFPA 701), railroaded with accent horizontal accent band at bottom of drapery panel

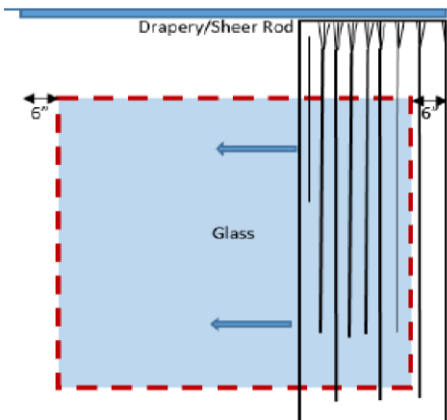
SIDE HEMS: 1.5" double turn sides

BOTTOM HEM: 4" double turn bottom with beige beaded chain weight

HARDWARE: Ceiling mounted white architectural track

SIZING: Hardware track to extend 6" beyond either side of window opening

- NOTES:**
1. Grommet/stiffener on leading edge for baton attachment to face.
 2. Sheer to be furnished with 6" return on outboard edge of panel to meet the window wall.
 3. Pins to be set at a height to conceal the drapery rod when closed.
 4. Sheer to hang in front of Blackout Drapery.
 5. Std. White Fiberglass baton 60" AFF max
 6. Please order samples from all approved vendors, as there are slight pattern/ color variances.



APPROVED VENDORS

MFR: Fabtex
Model # SID18S

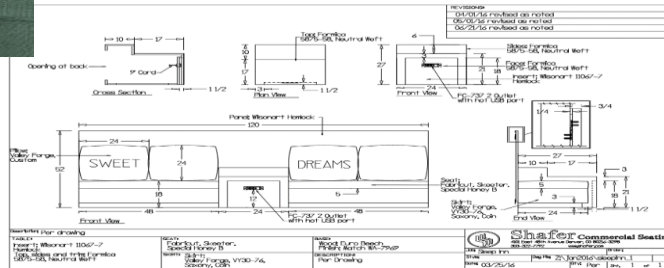
BRAND: Sleep Inn
AREA: Public Space

ITEM #:LBY-200

ITEM: Bench with Integrated Table / Back
Panel

DIMENSIONS 120" W x 52"H 24"D
TABLE FINISH Formica 5875-58 Neutral Weft Matte Finish
TABLE INSERT Wilsonart 11067K-07 Hemlock

- NOTES** 1. Shafer Standard 110v Outlet w/ USB port.
2. Pillows noted on LBY-200P and LBY-200P-A



APPROVED VENDORS

MFR: Shafer
Model: SLI-100LB

BRAND: Sleep Inn
AREA: Public Space - Lobby / Breakfast Area
ITEM: Fabric Seat (Lobby) / Settee Back Fabric
(Breakfast)

**ITEM #: LBY-200A /
BR-207A**

- NOTES:** 1. Passes minimum 42,000 double rubs, Wyzenbeek Test Method.
2. Passes NFPA 260A, UFAC Class 1
3. Refer to LBY-200
4. Refer to BR-207



APPROVED VENDORS

MFR: Fabricut

Pattern: Skeeter - L
Color: Special Honey D
Content: 54% Polyester, 46%
Cotton, 100% Acrylic Backing
Cleaning Code: Code S

MFR: Richloom

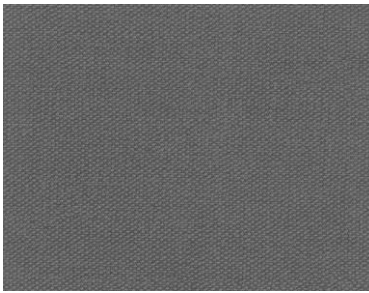
Pattern: Rectify
Color: Festival
Content: 100% Polyester, SR &
Acrylic Backing
Cleaning Code: S

BRAND: Sleep Inn
AREA: Public Space - Lobby / Breakfast Area
ITEM: Vinyl Fabric - Settee Seat / Apron

**ITEM #: LBY-200B /
BR-207B**

FACE: 100% PVC
ROLL SIZE: 54" Wide
BACKING: 100% Polyester
REPEAT: V: 0.00" x H: 0.00"
EXCEEDS: 100,000 Double Rubs

- NOTES:**
1. Meets or Exceeds NFPA 260.
 2. Meets or Exceeds ACT Performance Guidelines
 3. Refer to LBY-200
 4. Refer to BR-207



APPROVED VENDORS

MFR: Valley Forge
Pattern: Saxony
Color: Coin
Content: 100% Polyester

MFR: Richloom Contract
Pattern: Expansive
Color: Mocha
Content: 73% PVC, 3% PU, 24%
Polyester
Backing: 100% Polyester

BRAND: Sleep Inn
AREA: Lobby
ITEM: Graphic Accent Pillows

**ITEM #: LBY-200P /
LBY-203P**

COLOR 421-KKS
FR CODE CAL 117
REPEAT V:24" H:24"
UOM Each
EDGES Knife Edge
DIMENSION 20" x 20" Lobby Bench Accent Pillow - **NEW CONSTRUCTION**

10" x 20" Curved Sofa Accent Pillow - **RENOVATION PROPERTY ONLY**

NOTES Refer to LBY-200 and LBY-203



APPROVED VENDORS

MFR: Valley Forge

Pattern 1: DREAMS 4 421-KKS

Pattern 2: SWEET 4 421-KKS

BRAND: Sleep Inn
AREA: Lobby
ITEM: Accent Pillow

ITEM #: LBY-200P-A

DIMENSIONS 20" x 20"

EDGES No Welt

WIDTH: 55" Width

REPEAT No Horizontal/ Vertical Repeat

FABRIC Richloom, Pattern: Djembe, Color: Turquoise (100% Polyester)

- NOTES**
1. SR finish and backing
 2. Abrasion results 60,000 DR
 3. Brush pill 4.0
 4. Pillow fabric is shipped to Shafer for fabrication.



APPROVED VENDORS

MFR: Shafer
Model: SLI-100LB

BRAND: Sleep Inn
AREA: Lobby / Breakfast Area
ITEM: Accent Lounge Chair

ITEM #: LBY-201 / BR-201

DIMENSNIIONS 30" W x 32"D x 32"H
SEAT HEIGHT 18"
SEAT DEPTH 19.5
COM YDS 4
FINISH Wilsonart Hemlock 11067K-07



APPROVED VENDORS

MFR: Brookline Furniture
Item #: BF1028

BRAND: Sleep Inn
AREA: Lobby / Breakfast Area
ITEM: Fabric - Lounge Chair

**ITEM #: LBY-201A /
BR-201A**

DIMENSIONS 20" x 20"
EDGES No Welt
WIDTH: 55" Width
REPEAT No Horizontal/ Vertical Repeat

NOTES 1. SR finish and backing
2. Abrasion results 60,000 DR
3. Brush pill 4.0
4. Refer to LBY-201
5. Refer to BR-201



APPROVED VENDORS

MFR: Richloom
Pattern: Djembe
Color: Turquoise
Content: 100% Polyester

BRAND: Sleep Inn
AREA: Lobby / Breakfast Area
ITEM: Round Accent Table

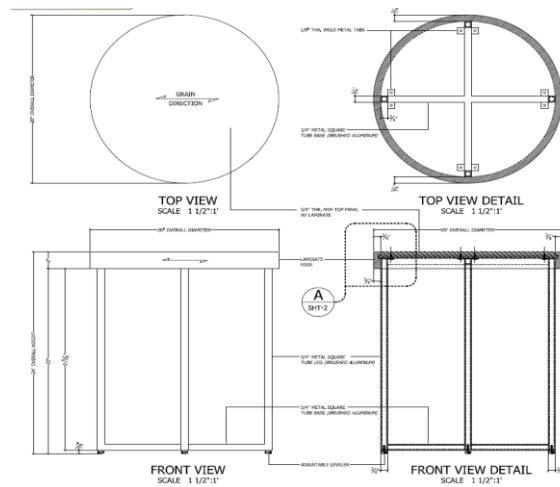
**ITEM #: LBY-202 /
BR-210**

DIMENSIONS 20" Dia. X 24"H

CONTENT 3/4" Thick MDF board

WOOD FINISH Laminate top (Formica 5875-58, Neutral Weft Matte Finish)

METAL BASE Brushed Aluminum



APPROVED VENDORS

MFR: Moonart

Model: CG-01

Laminate: Formica 5875-58

BRAND: Sleep Inn - **RENOVATION ONLY**
AREA: Public Space - Lobby
ITEM: Curved Sofa

ITEM #: LBY-203

DIMENSIONS 80" W x 39"D x 33"H
SEAT HEIGHT 20"H
SEAT DEPTH 28"D
COM YDS 13
LEG FINISH To match Wilsonart Hemlock 11067K-07

NOTE 1. This is only to be used in the existing properties that cannot accommodate LBY-200 Built-in bench.
2. Refer to LBY-203P for accent pillow details.



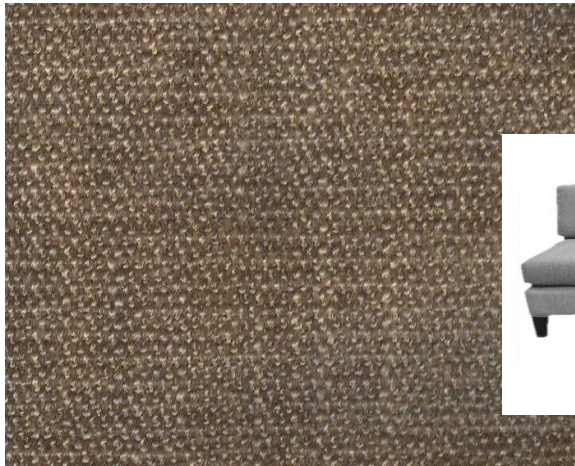
APPROVED VENDORS

MFR: Autrey Furniture
Item #: 458-03

BRAND: Sleep Inn - **RENOVATION ONLY**
AREA: Public Space - Lobby
Upholstery At Outside back, seat & sides
ITEM: of Curved Sofa

ITEM #: LBY-203A

- NOTES:** 1. Passes 50,000 double rubs, Wyzenbeek Test Method.
2. Upholstery is to be on the outside back, seat cushions, apron and sides of sofa.
3. Refer to LBY-203



Solid Upholstery

APPROVED VENDORS

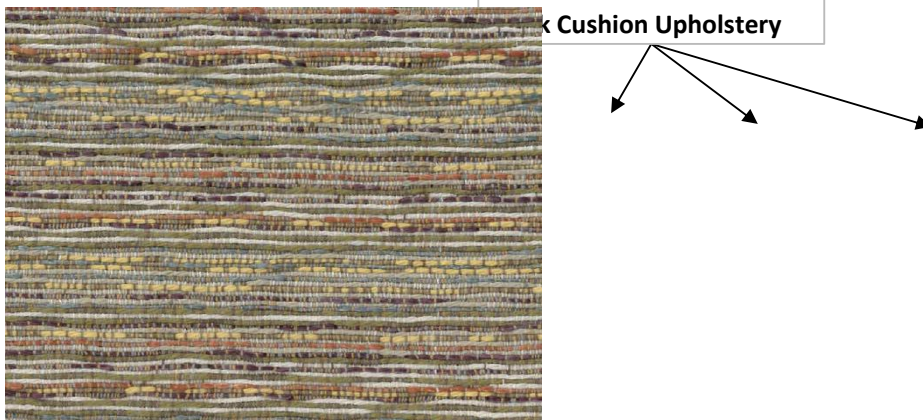
MFR: Richloom
Pattern: Avignon
Color: Mushroom
Content: 67% Polyester, 19%
Cotton, 14% Viscose
Cleaning Code: S

MFR: Culp
Pattern: Ground Control
Color: Truffle
Content: 100% Polyester

BRAND: Sleep Inn - **RENOVATION ONLY**
AREA: Public Space - Lobby
Upholstery At Back Cushions of Curved
ITEM: Sofa

ITEM #: LBY-203B

- NOTES:**
1. Passes 42,000 double rubs, Wyzenbeek Test Method
 2. Only the three cushions will be treated with this upholstery
 3. Refer to LBY-203



APPROVED VENDORS

MFR: Fabricut

Pattern: Skeeter

Color: Special Honey D

Composition: 54% Polyester, 46%

Cotton, 100% Acrylic Backing

Cleaning Code: Code S

MFR: Richloom

Pattern: Rectify

Color: Festival

Content: 100% Polyester, SR &

Acrylic Backing

Cleaning Code: S

BRAND: Sleep Inn - **RENOVATION ONLY**

AREA: Public Space - Lobby

ITEM: C-Table to be used with Curved Sofa **ONLY**

ITEM #: LBY-204

DIMENSIONS 14"W x 18"L x 27"H

CONTENT 3/4" Thick MDF board

WOOD FINISH Laminate top (Formica 5875-58, Neutral Weft Matte Finish)

METAL BASE Brushed Aluminum



APPROVED VENDORS

MFR: Moonart

Model: 613

Laminate: Formica 5875-58

Neutral Weft

BRAND: Sleep Inn - **RENOVATION ONLY**
AREA: Public Space - Lobby/Business Center
ITEM: Computer Desk

ITEM #: LBY-205

DIMENSIONS: 60"W x 24"D x 33"H

FINISH/STAIN COLOR: Wilsonart 11067K-78 Hemlock
Formica 5263- Carbon Ash

HARDWARE Richelieu 3487 Stainless Steel Bar Pull

- NOTES:** 1. Properties need to verify size and location.
2. Properties to use Ergonomic chair BUS-200 at desk

APPROVED VENDORS

MFR: Dubois Wood Products

Model: SL-M705

Laminate: Wilsonart 11067K-78

Hemlock / Formica 5263 - Carbon

Ash

BRAND: Sleep Inn
AREA: Breakfast Area
ITEM: Communal Table

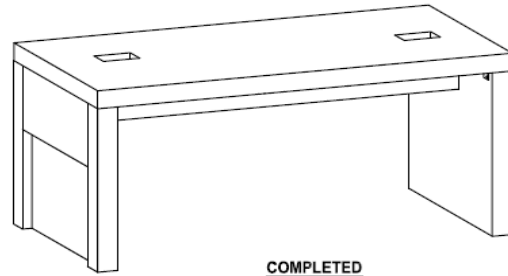
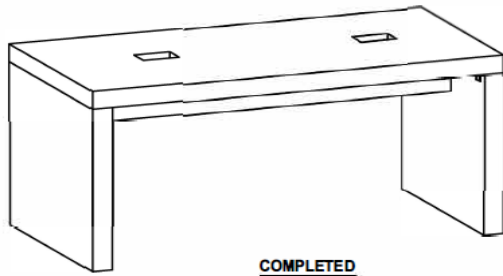
ITEM #: BR-202

DIMENSIONS 72"W x 42"D x 42"H (Bar Height)

FINISH Wilsonart: Studio Teak 790K-18 or Formica 9283-NG Walnut Riftwood

LEG OPTIONS 2 Leg Panel Option or Wall Facing Leg Options

- NOTES**
1. Includes MHO surface power unit: 2x Power, 2x Dual USB charging, silver aluminum frame, white face
 2. 2-Leg Panel Option is for properties with floor power outlets.
 3. Wall facing leg option is for properties with wall power outlets.
 4. For properties that are D2D and are placing the table below the TV is strongly encouraged to use the dining height table option.
72"W x 42"D x 29"H (Dining Height)



APPROVED VENDORS

MFR: American Hotel Registry
Item #: 3371-448D



BRAND: Sleep Inn
AREA: Breakfast Area
ITEM: Table Top

**ITEM #: BR-203T/
BR-204T /BR-205T**

DIMENSIONS 24" x 30" (2 person top)
30" x 30" (4 person top)
MATERIAL Formica 5875-58 Neutral Weft
THICKNESS 1 1/4"
EDGE Self Edge



APPROVED VENDORS

MFR: Shafer

Item #: LASE-02-2430 (2 person table top)

Item #: LASE-02-3030 (4 person table top)



BRAND: Sleep Inn
AREA: Breakfast Area
ITEM: Table Base

ITEM #: BR-203B/ BR-204B

DIMENSIONS 24" x 24" X-Base
FINISH Black Wrinkle Finish

NOTES: 1. Use for both 24" x 30" and 30" x 30" table top.



APPROVED VENDORS

MFR: Shafer
Item #: 400-2424-2

BRAND: Sleep Inn
AREA: Breakfast Area
Dining Table Bar - Bar Height (2-Top)
ITEM: Table Base

ITEM #: BR-205B

DIMENSIONS 22" Round
FINISH Black Wrinkle Finish

NOTES: 1. Use for bar height table.



APPROVED VENDORS

MFR: Shafer
Item #: 250-22-3

BRAND: Sleep Inn
AREA: Breakfast Area
ITEM: Settee Table Top

ITEM #: BR-206T

DIMENSIONS 24" x 48" (2 person top)
MATERIAL Wilsonart 11067K-07 Hemlock
THICKNESS 2" Thick Top
EDGE Drop Edge



APPROVED VENDORS

MFR: Shater

Model # 400-2230-2



BRAND: Sleep Inn
AREA: Breakfast Area
ITEM: Settee Table Base

ITEM #: BR-206B

DIMENSIONS 24" x 24" X-Base
FINISH Black Wrinkle Finish

NOTES: 1. Use for 24" x 48" Table Tops



APPROVED VENDORS

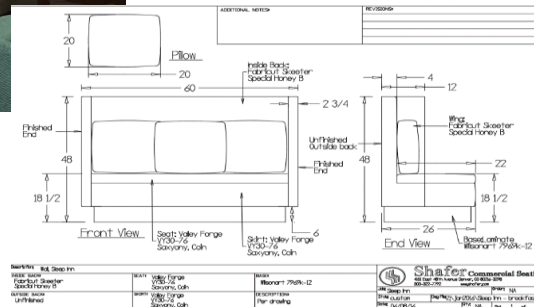
MFR: Shafer
Item: 400-324-2

BRAND: Sleep Inn
AREA: Breakfast Area
ITEM: Settee with Accent Pillows

ITEM #: BR-207

DIMENSIONS: 60"W x 48"H x 26"D
BASE LAMINATE: Wilsonart 7969K-12
INSIDE BACK FABRIC: Fabricut, Pattern: Skeeter, Color: Special Honey D
SEAT FABRIC Valley Forge, VY30-76 Saxony, Coin
 Richloom, Expansive, Mocha
SKIRT FABRIC Valley Forge, VY30-76 Saxony, Coin
 Richloom, Expansive, Mocha
ACCENT PILLOWS 10" X 20" (3 per settee)

- NOTES**
1. See BR-207A
 2. See BR-207B
 3. See BR-211A for accent pillow fabric details and vendors.
 4. 3 accent pillows per settee



APPROVED VENDORS

MFR: Shafer
 Item: SLI-200BS

Back View	SLI-200BS	Item	SLI-200BS	Shafer	Commercial Seating
Base Laminate	Wilsonart 7969K-12	Material	Wilsonart 7969K-12	Shafer	Commercial Seating
Inside Back Fabric	Fabricut Skeeter Special Honey B	Material	Fabricut Skeeter Special Honey B	Shafer	Commercial Seating
Seat Fabric	Valley Forge VY30-76 Saxony, Coin	Material	Valley Forge VY30-76 Saxony, Coin	Shafer	Commercial Seating
Skirt Fabric	Valley Forge VY30-76 Saxony, Coin	Material	Valley Forge VY30-76 Saxony, Coin	Shafer	Commercial Seating

BRAND: Sleep Inn
AREA: Breakfast Area
ITEM: Dining Chair

ITEM #: BR-208

OVERALL DIMENSIONS 18"W x 18.5"D x 35"H

SEAT DIMENSIONS 17.5"W x 15"D x 18"H

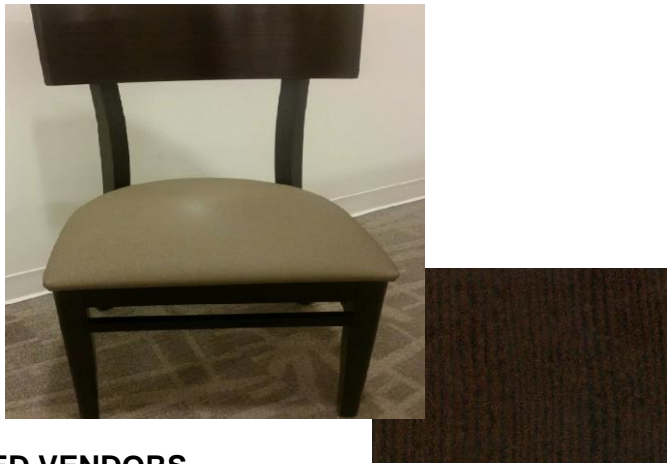
WEIGHT 21lbs

YARDAGE 3/4 yds. for 2 chairs

FRAME FINISH To match Wilsonart Laminate Hemlock

CONSTRUCTION U-Frame made of solid European Beech and all European Beech plywood.

NOTES 1. Refer to BR-208A for fabric details



APPROVED VENDORS

MFR: Shaefer
Item #: WC-1143UR

BRAND: Sleep Inn
AREA: Breakfast Area
ITEM: Dining Chair Fabric

ITEM #: BR-208A

WIDTH 54"W
FACE 100% PVC
BACKING 100% Polyester
REPEAT V: 0.00" x H: 0.00"
DURABILITY Exceeds 100,000 Double Rubs
NOTES 1. Meets or exceeds NFPA 260
2. Meets or exceeds ACT
3. Refer to LBY-208



APPROVED VENDORS

MFR: Valley Forge
Item: VY30-76
Pattern: Saxony
Color: Coin
Content: 100% Polyester

MFR: Richloom Contract
Pattern: Expansive
Color: Mocha
Content: 73% PVC, 3% PU, 24% Polyester
Backing: 100% Polyester

BRAND: Sleep Inn
AREA: Breakfast Area - Communal Table
ITEM: Barstools

ITEM #: BR-209

DIMENSIONS: 19.25"W x 20.5"D x 42.5"H
FINISH: Chrome
SEAT/ BACK FINISH: W10(S) Dark Walnut

NOTES: 1. Silver footrest and clear rubber glides



APPROVED VENDORS

MFR: MTS Seating

Item: 189-30 Toledo Barstools

BRAND: Sleep Inn
AREA: Breakfast Area

ITEM #: BR-211

ITEM: Accent Lounge Chair - Orange Egg Chair

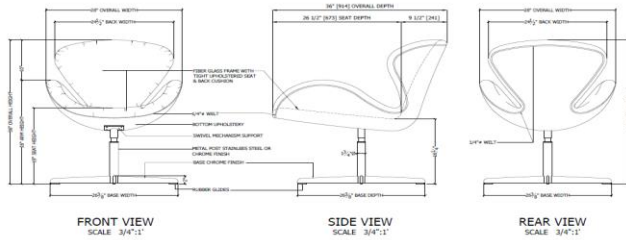
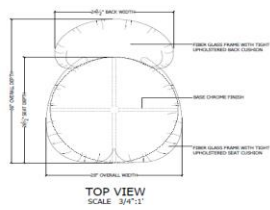
DIMENSIONS 28"W x 36"D x 36"H x 19"SH x 26"AH

METAL BASE Chrome Finish

HARDWARE Rubber Glides

YARDAGE 4yds

- NOTES**
1. Swivel Mechanism
 2. See BR-211A for fabric details



APPROVED VENDORS

MFR: Moonart

Model: SE-01

BRAND: Sleep Inn
AREA: Breakfast Area

ITEM #: BR-211A

ITEM: Fabric- Accent Lounge Chair (Breakfast Room) - Orange Egg Chair

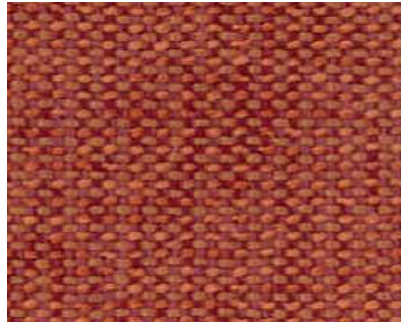
WIDTH 56"
REPEAT V

NOTE 1. Light Arcylic Backing and Nanotex Soil Treatment included
2. See BR-207 and BR-211

APPROVED VENDORS



MFR: Fabricut Contract
Pattern: Reservoir Hill - L
Color: Tang
Contents: 50% Polyester, 50% Acrylic



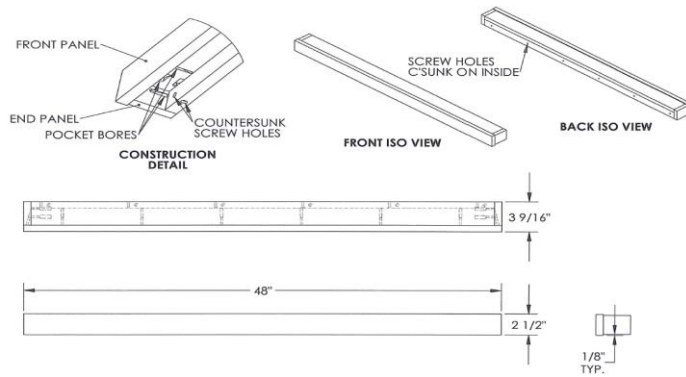
MFR: Richloom Fabrics
Pattern: Delectable
Color: Orange
Content: 100% Polyester

BRAND: Sleep Inn
Breakfast Area - Business Nook / Coffee
AREA: Station
ITEM: Wall Shelf

ITEM #:BR-212

DIMENSIONS 48"W x 2.5"H x 3 9/16" D

FINISH To match Wilsonart Hemlock 11067k-07

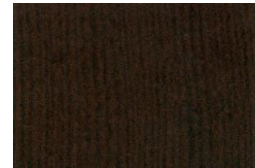


APPROVED VENDORS

MFR: Dubois Wood

Products

Item: SL-B735TX



BRAND: Sleep Inn
AREA: Business Center
ITEM: Ergonomic Chair

ITEM #: BUS-200

ITEM/ TYPE: Ergo Chair

DIMENSIONS: 22.5"-24"W x 23"-25"D x 38"-41.5"H
Seat Heigh: 16.5" - 21.25"
Arm Height: 25.5" - 29"

FRAME FINISH: Chrome

ARM FINISH: Chrome

TREATMENT TO MEET: Entire piece must meet CA117 and comfort

CONSTRUCTION: Casters, 5 prong spider base, pneumatic seat height adjustment.

BASE: 5 Leg polished chrome. Spider Base.

MECHANISM: One touch height adjustment, tilt tension, and tilt lock.

UPHOLSTERY: Black Hard Mesh seat and back (Global Industries and Startex)
Black Mid Mesh Back w/ Padded Black Bonded Leather Seat (Office Star Products)

NOTES: 1. Contract quality, suitable for commerical use

APPROVED VENDORS



MFR: GI
STYLE: C



BRAND: Sleep Inn
AREA: Meeting Room
ITEM: Stack Chairs

ITEM #: MR-200 /
MR-200A

DIMENSIONS 18"W x 22.5"D x 36.5"H

COM 0.85 yds

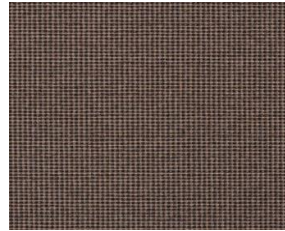
CONSTRUCTION High strength steel fame.
Waterfall seat with COMFORTbliss padding.

FRAME FINISH Espresso M7 Powdercoat

FABRIC Tribute II TR-500 Cocoa

FABRIC WIDTH 54" W

NOTES 1. Clear nylon floor glides with protective boot and stacking bumper.
2. Fabric comes from MTS.



APPROVED VENDORS

MFR MTS Seating

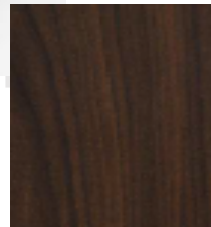
STYLE: 578 Omega II

Stackers

BRAND: Sleep Inn
AREA: Meeting Room
ITEM: Folding Table

ITEM #: MR-203

DIMENSIONS 18" X 60"
SURFACE MATERIAL Plywood Core Top
LAMINATE SURFACE Gunstock Walnut
METAL FINISH Black leg finish
VINYL EDGE Flat Vinyl T-mold edge in black



APPROVED VENDORS

MFR MTS Seating
STYLE: 415 Arched Leg
Banquet Table

BRAND: Sleep Inn
AREA: Lobby
ITEM: Floor Lamp

ITEM #: LBY-300

OVERALL DIMENSIONS 17"W x 63"H X 22.5"D
SHADE DIMENSIONS 17" Diameter, 12"H
SHADE FINISH Zebrawood Faux Veneer Print
FINISH Satin Nickel



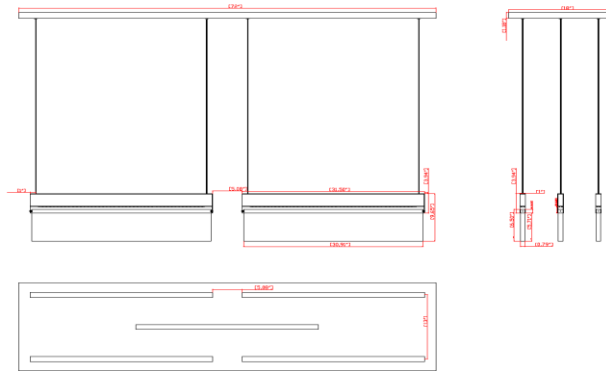
APPROVED VENDORS

MFR: Startex Industries
STYLE: STX-2254FL-B

BRAND: Sleep Inn
AREA: Lobby - Front Desk
ITEM: Pendant

ITEM #: LBY-400

OVERALL DIMENSIONS 18" H x 72"L
FINISH Dark Bronze
BULB TYPE Integrated LED
CONSTRUCTION Acrylic and Metal
SHADE MATERIAL Frosted White Acrylic



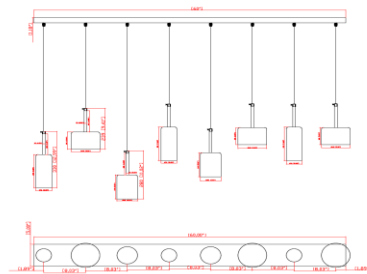
APPROVED VENDORS

MFR: Startex Industries
STYLE: STX-PD22-FD

BRAND: Sleep Inn
AREA: Breakfast Area - Communal Table
ITEM: Pendant

ITEM #: BR-400

OVERALL DIMENSIONS 5'W x 60"H
OF BULBS 8
FINISH COLOR Satin Nickel
BULB G4 10W Halogen Bulbs
SHADE DIMENSIONS 3x (3"Dia x 7.7"H), 2x (3.9"Dia x 5.5"H), 3x (5.5"Dia x 3.9"H)
SHADE MATERIAL Glass



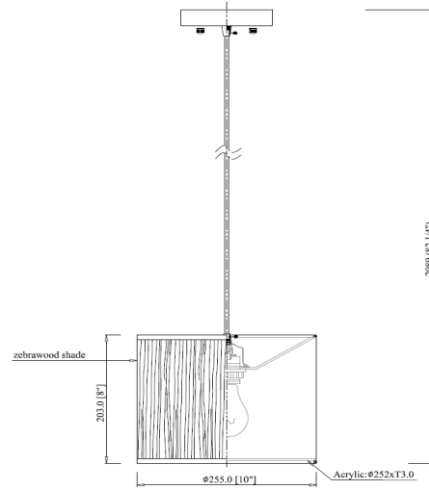
APPROVED VENDORS

MFR: Startex Industries
STYLE: STX-PD22-COM

BRAND: Sleep Inn
AREA: Business Nook/ Coffee Station
ITEM: Pendant

ITEM #: BR-401

OVERALL SIZE 10"Dia x 8"H shade with 5" diameter canopy
OF BULBS 1
STEM FINISH COLOR Satin Nickel
COLOR OF SHADE Zebrawood pattern printed fabric shade
SHADE DIMENSIONS 10" Dia x 8"H
SHADE MATERIAL Fabric with Frosted Acrylic Diffuser



APPROVED VENDORS

MFR: Startex Industries
STYLE: STX-PD22-BK

BRAND: Sleep Inn
AREA: Corridor
ITEM: Wall Sconce

ITEM #: COR-400

DIMENSIONS 7"W x 4"D x 12.5"H
FINISH Brushed Nickel
SHADE DIMENSIONS 6"W x 4"D x 8"H
SHADE MATERIAL Linen Hardback
SHADE COLOR Ivory
SOCKET BASE TYPE Type A
BULB CFL or Equivalent
MAX WATTAGE 100W
SWITCH LOCATION Hardware



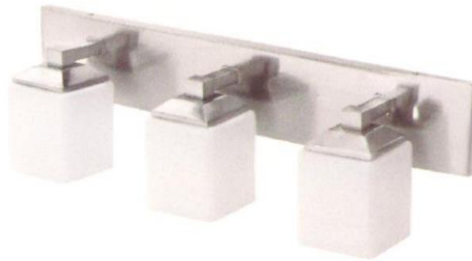
APPROVED VENDORS

MFR: Startex Industries
Model: SIL-8CS

BRAND: Sleep Inn
AREA: Public Restrooms
ITEM: Vanity Light

ITEM #: PBR-400

DIMENSIONS 24"W x 8.5"H, Drop Ext. 5.25"
FINISH Brushed Nickel
BULB UL/CUL - 3X60W MAX
MAX WATTAGE 60W Max
SHADE MATERIAL Glass
SHADE COLOR White
SHADE DIMENSIONS 3.75" Sq. x 5.25" Vt. Ht



APPROVED VENDORS

MFR: Startex Industries
ITEM: SIL-12VA3

MFR: Malar Industries
ITEM: VL4008

BRAND: Sleep Inn
AREA: Lobby - Next to Front Desk
ITEM: Artwork

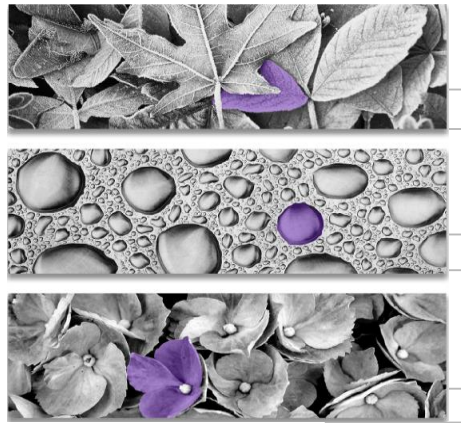
ITEM #: LBY-500

OVERALL SIZE 16"W x 48"H x 1.5"D (each/ 3 pieces required)

STYLE Print on Canvas, gallery wrapped on all sides

HARDWARE Hardboard backing, 3pt Security hardware installed on back

NOTES 1. Imagery to be black and white nature images with purple accents.
Each vendors images vary.



APPROVED VENDORS

MFR: Interia Hospitality

BRAND: Sleep Inn
AREA: Breakfast Area - Settee Gallery Wall
ITEM: Artwork & Mounting Cables

**ITEM #: BR-500A -
BR-500J**

OVERALL DIMENSIONS 9' W x 39"H

DIMENSIONS OF ARTWORK 24" x 24" (2); 24" x 12" (2); 12" x 12" (2); 12" x 24" (2);
24" x 30" (1) = Total 9 pieces

THICKNESS: 1/4" Acrylic

COLOR Black & White

MATERIALS Metal cables with acrylic frames

MOUNTING CABLE Cable lengths will vary per vendor. Contact vendor directly for additional details.

- NOTES**
1. Direct print to acrylic regional Images. Images to reflect region where hotel is located.
 2. Black and white images only
 3. For Existing properties, a minimum of 4 pieces acceptable as space permits. Sizes: 24" x 24" (1); 24" x 12" (1); 12" x 12" (2)



APPROVED VENDORS

MFR: Artline Group

MFR: Foundation Art

BRAND: Sleep Inn
AREA: Breakfast Area - Serving Area
ITEM: Artwork

**ITEM #: BR-501A -
BR - 501D**

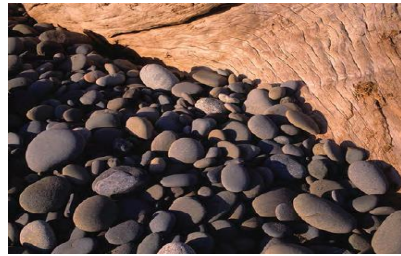
OVERALL DIMENSIONS 28" x 28" x 2"

STYLE Print on Canvas, gallery wrapped on all sides

HARDWARE Hardboard backing, 3pt Security hardware installed on back

OF PIECES REQUIRED 4

- NOTES**
1. Nature inspired artwork to be selected by property from provided selections.
 2. Images below are only reference images.



APPROVED VENDORS

MFR: Interia Hospitality

BRAND: Sleep Inn
AREA: Meeting Room
ITEM: Artwork (Regional)

ITEM #: MR-500

IMAGE SIZE 23.5"W x 13.5"H
OVERALL SIZE 30"W x 20"H
GLASS SIZE 28"W x 18"H
GLASS TYPE Standard
FRAME FINISH Flat Black
FRAME SIZE 1 1/4"
MAT COLOR White
MAT SIZE 2T 2B 2S
MOUNTING Horizontal

NOTES 1. Regional artwork to be selected by property.
2. Images below are only reference images.



MR-500A
MFR: Startex
MFR: Wendover Art



MR-500B
MFR: Startex
MFR: Wendover Art



MR-500C
MFR: Startex



MR-500D
MFR: Startex

BRAND: Sleep Inn
AREA: Public Restrooms - Optional
ITEM: Artwork (Regional)

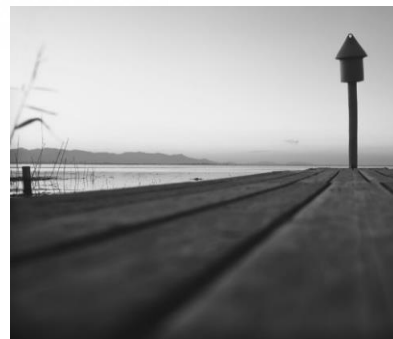
ITEM #: PBR-500

DIMENSIONS 11 1/2" W x 11 1/2"H
OVERALL SIZE 18"W x 18"H
GLASS SIZE 16"W x 16"H
GLASS TYPE Standard
FRAME FINISH/ MODEL Flat Black
FRAME SIZE 1 1/4"
MAT / COLOR White
MAT SIZE 2T 2B 2S
MOUNTING Horizontal

NOTES 1. Regional artwork to be selected by property.
2. Images below are only reference images.



MFR: Startex



MFR: Wendover

BRAND: Sleep Inn
AREA: Public Restrooms
ITEM: Vanity Mirror

ITEM #: PBR-502

OVERALL SIZE 25"W x 40"H
GLASS SIZE 21"W x 36"
FRAME FINISH: To Match Framerica BW54067 Coffee Bean
FRAME MATERIAL Engineered Wood
FRAME SIZE: 2 1/4"W x 3/4"H 1/2" Rabbet"
BEVEL: None
MOUNTING Security, Vertical



APPROVED VENDORS

MFR: Startex Industries
Item: M-SI-PVA

MFR: Wendover Art Group
Item: W-PBR-502

BRAND: Sleep Inn
AREA: Fitness Center
ITEM: Artwork (Regional)

ITEM #: EX-500

IMAGE SIZE 23.5"W x 17.5"H
OVERALL SIZE 30"W x 24"H
GLASS SIZE 28"W x 22"H
GLASS TYPE Standard
FRAME FINISH/ MODEL Flat Black
FRAME SIZE 1 1/4"
MAT / COLOR White
MAT SIZE 2T 2B 2S
MOUNTING Horizontal

NOTES 1. Regional artwork to be selected by property.
2. Images below are only reference images.



EX-500A-STX
MFR: Startex Industries



EX-500B-STX
MFR: Startex Industries



EX-500A-WEN
MFR: Wendover Art Group



EX-500B-WEN
MFR: Wendover Art Group

BRAND: Sleep Inn
AREA: Office
ITEM: Ergonomic Chair

ITEM #:OFF-200

DIMENSIONS 23"W x 23"D x 38"H
SEAT HEIGHT 20.5"W x 20.5"D x 3.5"T
ARM HEIGHT 25.5"
FRAME FINISH Polished Aluminum Finish Arms
UPHOLSTERY PATTERN Black Bonded Leather Seat



APPROVED VENDORS

MFR: Office Star
STYLE: 583814

BRAND: Sleep Inn
AREA: Office
ITEM: Office Desk

ITEM #: OFF-201

DIMENSIONS 29"H x 60"W x 30"D
FINISH / STAIN NAPA Espresso



APPROVED VENDORS

MFR: Office Star
STYLE: NAPTYP4

BRAND: Sleep Inn
AREA: Office
ITEM: Cabinet Base

ITEM #: OFF-202

DIMENSIONS 29"H x 36"W x 22"D
FINISH / STAIN NAPA Espresso



APPROVED VENDORS

MFR: Office Star
STYLE: NAP13

BRAND: Sleep Inn
AREA: Office
ITEM: Office Cabinet Hutch

ITEM #: OFF-203

DIMENSIONS 36"H x 36"W x 14"D
FINISH / STAIN NAPA Espresso



APPROVED VENDORS

MFR: Office Star
STYLE: NAP53

BRAND: Sleep Inn
AREA: Office
ITEM: Office Guest Chair

ITEM #: OFF-204

FRAME FINISH Black
UPHOLSTERY PATTERN Faux Leather - U6
UPHOLSTERY COLOR Black



APPROVED VENDORS

MFR: Office Star
STYLE: 84510

BRAND: Sleep Inn
AREA: Offices
ITEM: Artwork

**ITEM #: OFF-500 -
OFF-502**

DIMENSIONS 17 1/2"W x 17 1/2"H
OVERALL SIZE 24"W x 24"W
GLASS SIZE 22"W x 22"H
FRAME FINISH Flat Black
FRAME SIZE 1 1/4"
MAT/ COLOR White
MAT SIZE 2T 2B 2S
MOUNTING Horizontal
HARDWARE 3pt Security hardware installed on back

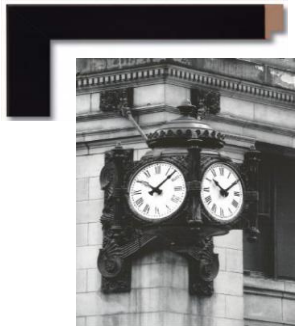
NOTES 1. Regional artwork to be selected by property.
2. Images below are only reference images.



OFF-500 STX
MFR: Startex
MFR: Wendover



OFF-501 STX
MFR: Startex
MFR: Wendover



OFF-502 STX
MFR: Startex
MFR: Wendover

BRAND: Sleep Inn
AREA: Pool
ITEM: Chaise Lounge

ITEM #: POL-200

DIMENSIONS 30"W x 78"D x 14"H
FRAME COLOR Bronze Mist
SLING COLOR Espresso
MATERIAL Resin



APPROVED VENDORS

MFR: Grosfillex

STYLE: Marina Sling Chaise w/ Bronze
Mist Frame

STYLE #: 9951537

BRAND: Sleep Inn
AREA: Pool
ITEM: Chair

ITEM #: POL-201

DIMENSIONS 18 1/2"W x 22"D x 35 1/2"

COLOR Espresso

MATERIAL Resin



APPROVED VENDOR

MFR: Grosfillex

STYLE: Havana Armchair

STYLE #: 45 4090 37 Espresso

BRAND: Sleep Inn
AREA: Pool
ITEM: Table

ITEM #: POL-202

SIZE Dia 42"
MATERIAL Molded Melamine
TABLE BASE STYLE Y-Leg Pedestal Base
COLOR Bronze Mist
BASE ITEM # US850037



APPROVED VENDORS

MFR: Grosfillex
COLOR: #4 White
STYLE #: 99881004

BRAND: Sleep Inn
AREA: Pool
ITEM: Umbrella

**ITEM #: POL-203 /
POL-204**

FRAME COLOR Khaki
FRAME BASE Black
FRAME MATERIAL Resin



POL-203

MFR: Grosfillex

STYLE: 7ft Wooden Market Umbrella w/
1 1/2" Pole

STYLE #: 40331

POL-204

MFR: Grosfillex

STYLE: 361B Umbrella Base Ring

STYLE #: 98600617



BRAND: Sleep Inn
AREA: Pool
ITEM: Side Table

ITEM #: POL-205

FRAME COLOR Bronze Mist
MATERIAL Resin



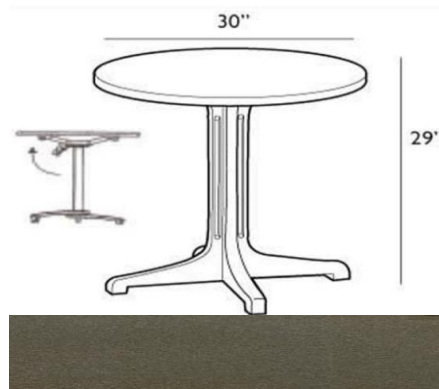
APPROVED VENDORS

MFR: Grosfillex
STYLE: Miami 17" Square Low Table
STYLE #: US529837

BRAND: Sleep Inn
AREA: Pool
ITEM: Table - Small

ITEM #: POL - 206

TABLE TOP SIZE 30" Dia
MATERIAL Molded Melamine
TABLE TOP COLOR #4 White
TABLE BASE COLOR Bronze Mist



APPROVED VENDORS

MFR: Grosfillex
STYLE #: 99831104
TABLE BASE #: 55631837

BRAND: Sleep Inn
AREA: Pool
ITEM: Stacking Deck Chair - Optional

ITEM #: POL-207

DIMENSIONS 30"W x 34"D x 41"H
FRAME COLOR White



APPROVED VENDORS

MFR: Grosfillex
STYLE : Bahia Stacking Chair
STYLE #: 47658004

BRAND: Sleep Inn
AREA: Breakfast Area / Fitness Center
ITEM: Television

ITEM #: BR-600 / EX-600

SIZE Breakfast Area Television- 54" (BR-600)
Fitness Center Television - 32" (EX-600)

- REQUIREMENTS:**
- All TVs must be hospitality-grade
 - Minimum 54" flat-panel HDTVs with integrated content security and decoding technology for Breakfast Area (Pro:Idiom)
 - Warranted for commercial use
 - Programmable start channels
 - Cloning capabilities for simplified management

NOTES: 1. Please refer to Choice Buys for the most up to date Rules & Regulations for TV's.



APPROVED VENDORS:

MFR: LG

MFR: RCA

BRAND: Sleep Inn
AREA: Lobby
ITEM: Front Desk Sign

ITEM #:LBY-800

ITEM/ TYPE: Front Desk Logo Plaque
FINISHED DIMENSIONS: 24" W x 24" H
MATERIAL: 1/16" Brushed Aluminum Laminate
GRAPHIC : Text Color: Pantone: PMS 411 C
Arch Color: Pantone: PMS 273 C

- NOTES:**
1. Wall Mounted
 2. Mounting Height: 5' 6" to the bottom of the sign.
 3. Sign to be centered on the wall.
 4. Options: Sleep Inn and Sleep Inn & Suites for suite properties.

Sleep Inn & Suites option is required for all suite property.



APPROVED VENDORS

MFR: All Signs Systems

1. Sleep Inn Logo : 0112SI01
2. Sleep Inn & Suites Logo: 0112SIS2

BRAND: Sleep Inn
AREA: Public Space

ITEM #: GR-800

ITEM: Signage Package (New Construction)

ITEM/ TYPE: Signage Package

ITEMS INCLUDES: 1. Room Signage
2. All public space signage
3. Directional Signage

NOTES: 1. Package is based on 84 rooms
2. Front Desk Logo Plaque to be ordered separately.



APPROVED VENDORS:

MFR: All Signs Systems

MFR: Identity Group

MFR: Western Hotel Signs

BRAND: Sleep Inn
AREA: Public Space / Back of House
ITEM: Corner Guards- Optional

SIZE OPTIONS: Width: 1 1/2
Height: 5,7.5, 8

CORRIDOR COLOR: Sand Dune 0278
LOBBY/ BREAKFAST COLOR: Antique White 0104
BACK OF HOUSE COLOR: Antique White 0104/ Chino 0258

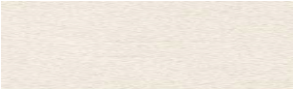
NOTES: 1. Optional
2. Please order samples , as there are slight color variances.



Sand Dune 0278



Chino 0258



Antique White 0104



APPROVED VENDORS

MFR: InPro Corporation